



2018  
**SCUBA**  
English

**SEAC**<sup>®</sup>  
Sea is calling

# COLLECTION 2018

**05** DIVE COMPUTER TECHNOLOGY

**09** TORCH TECHNOLOGY

16 TECHNICAL CHARACTERISTICS

**17** REGULATOR TECHNOLOGY

28 TECHNICAL CHARACTERISTICS

**29** DIVING INSTRUMENT TECHNOLOGY

**33** BCD TECHNOLOGY

42 TECHNICAL CHARACTERISTICS

**43** SUIT TECHNOLOGY

44 DRY SUITS

45 SUITS SIZE CHART

46 WETSUITS

65 UNDERSUITS AND HOODS

66 WETSUIT SIZE TABLE

67 TECHNICAL CHARACTERISTICS

69 GLOVES

71 BOOTS

73 RASH GUARD

78 SIZE TABLE

**79** MASK AND SNORKEL TECHNOLOGY

80 MASKS

95 TECHNICAL CHARACTERISTICS

96 SNORKELS

104 TECHNICAL CHARACTERISTICS

**105** FIN TECHNOLOGY

114 TECHNICAL CHARACTERISTICS

**115** KNIFE TECHNOLOGY

120 TECHNICAL CHARACTERISTICS

**121** BAG TECHNOLOGY

126 TECHNICAL CHARACTERISTICS

**127** ACCESSORIES



## Passion fast forward

Seac Sub has been a leading dive company since 1971. Founded by Marco Arata and Attilio Rapallini, our company has grown since then in size, strength, and innovation to become a benchmark in the industry. With the arrival of Marco's son Daniele Arata, we strategically reorganized the company, expanding our product lines and repositioning our brand image, bringing us to the forefront while continuing to honor our founding principles.



## Logistics and shipping

Building on the changes we made in response to new challenges and a constantly evolving market, in 2014 we revised and reorganized our logistical and production departments. We brought new technologies and new management systems online to make our shipping and supply department work better and more efficiently as we continue to serve the entire world. Our high standards and advanced production and orders management criteria can satisfy every customer.



## Internal R&D department

In order to continuously improve our products and deliver our famous high quality, at Seac we have an internal R&D department. Our designers boast extensive expertise in the sector and work with some of the most advanced design and development systems in existence. Our staff supports every phase of our industrial design with help from expert consultants who also have vast experience in the diving sector. But products are of the finest quality only insofar as the materials used to make them are equally exceptional. That's why our company produces the components for our products using materials like rubber, liquid silicone, and technopolymers. What's more, our fins, masks, and snorkels are manufactured in modern facilities under the careful eye of staff with long-standing experience.



## **In-house manufacture of regulators**

Seac regulators are designed, developed, and manufactured entirely in Italy in our own internal departments. Our regulators department is equipped with the most advanced calibration and testing devices available. Every regulator undergoes test bench testing, calibration, and inspection. Our lab has two ANSTI machines for dynamic control, and dive simulations are performed under the most real and extreme conditions, measuring and recording parameters and breathing effort as dictated by European Regulations.



## **Dive computer technology**

Seac computers represent the safest and most technologically advanced options the market has to offer in this product category. Developed internally and manufactured in Italy, they are ideal companions, not only when you're diving, but for your free time and preparatory training in the water as well, thanks to their outdoor and fitness functions.

# GURU



COLOR



**Dive modes:** Air, Nitrox, Depth gauge, Freedive • **Gases that can be set:** 2 • **Algorithms:** Buhlmann ZHL-16B • **Algorithm customization:** 6 Levels of conservatism can be set • **Display:** 80 x 80 pixel dot matrix graphic LCD • **Battery:** Li-ion rechargeable via USB cable • **DiveLogger:** free download from seacsub.com • **Updates:** User installable, can be downloaded from seacsub.com • **Case material:** High-strength technopolymer • **Glass:** Mineral glass • **Ring nut:** Stainless steel • **Strap:** Silicone, extender provided standard • **Air data transmission:** HP wireless compatible probe • **Maximum depth:** 150 m • **Made in Italy** • **Standard:** USB cable and color extension strap.

**GURU • 1600002**

● RED	000720
● CLEAR BLUE	000080
○ WHITE	000120
● BLACK	000520



## HP TRANSMITTER

**NEW**



Rechargeable probe for detecting tank pressure, with direct transmission to the Guru computer. Three pressure indicator LEDs: green, yellow, and red.

### HP TRANSMITTER

CODE 1630003000000

## SCREEN PROTECTOR



### SCREEN PROTECTOR

CODE 1630006000000

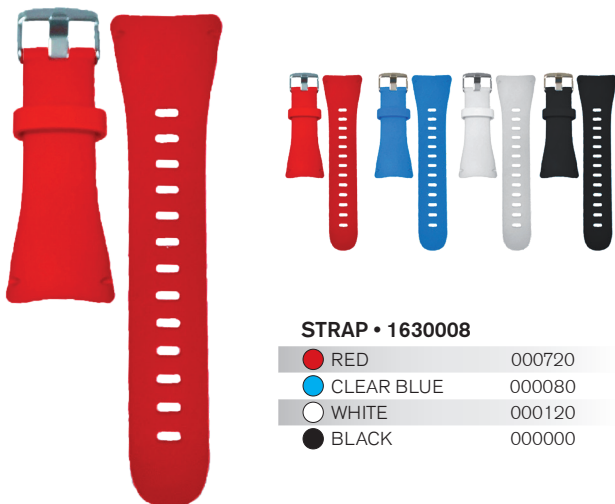
## USB CABLE



### USB CABLE

CODE 1630010000000

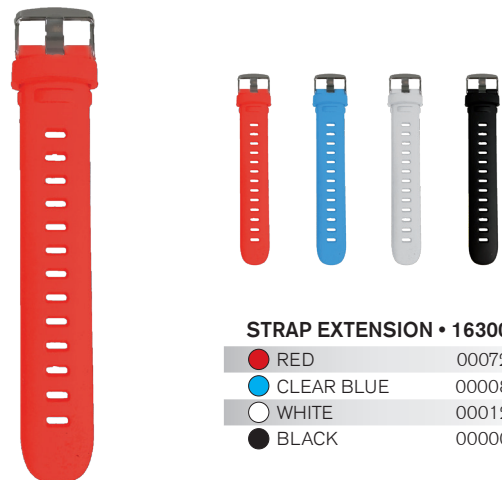
## STRAP



### STRAP • 1630008

● RED	000720
● CLEAR BLUE	000080
○ WHITE	000120
● BLACK	000000

## STRAP EXTENSION



### STRAP EXTENSION • 1630009

● RED	000720
● CLEAR BLUE	000080
○ WHITE	000120
● BLACK	000000

# GURU



2 gases



Wireless



Compass



Fitness



Outdoor



DIVE MODES	Air - Nitrox - Depth Gauge - Freedive
GASES MANAGED	2 Mixes (O <sub>2</sub> : 21% - 99%)
ALGORITHM	Buhlmann ZHL-16 B
PERSONAL ALGORITHM ADAPTATIONS	6 levels of protection
RDM (ADVANCED REPETITIVE DIVE MANAGEMENT)	Yes
GAS SWITCH AND GAS BREAK	Yes
PO <sub>2</sub>	1.2-1.6
CNS	Yes
ALTITUDE ADAPTATION	Automatic
WATER ADAPTATION	Manual (salt or fresh)
DEEP STOP	Yes
SAFETY STOP PERSONALIZATION	Yes, time and depth
LAST STOP DEPTH	Yes (from 6 m to 1 m)
ALARMS	Yes
PLANNER	NDL + Deco Planner
WIRELESS PROBE	Compatible
COMPASS	3D self-equalizing, 1° resolution
OUTDOOR FUNCTIONS	Altimeter, Barometer, Temperature, Weather forecast
FITNESS FUNCTIONS	Step counter, distance, speed, calories burned
STEP COUNTER	Yes
OTHER SPECIAL FUNCTIONS	Stopwatch, Level, Magnetometer, Phases of the Moon, Alarm clock, Double time zones
BACKLIGHTING	SuperBright LEDs
BACKLIGHTING MODES	Timer, Manual on/off, Always on during the dive
SCREEN	100% matrix, resolution 80x80 pixel
CASE	Composite
GLASS	Mineral
STRAP EXTENSION	Included
BATTERY	Lithium ion, USB rechargeable ~ 40 hr (dive) ~ 2-3 months (watch) ~ 6-7 months (stand-by)
LOGBOOK	~ 160 hours scuba (sampling 10 sec)
MAXIMUM DEPTH	150 mt / 500 ft
PC/MAC CONNECTION	Yes, USB interface included
UPDATES	Manual updates



## Torch technology

Sometimes getting around underwater can be complicated, especially when the light isn't perfect. That's why Seac offers a full range of diving torches characterized by their increasingly innovative design that doesn't forget the influence of tradition and historic expertise. The very finest materials and highly functional precision components make Seac torches some of the most beloved with customers.

# R30



## FEATURES:



1500 Lumens of light intensity.



Battery charging system via USB cable.



Option to vary the light beam from 12° to 75°.

Aluminum dive torch with tempered optical glass • **Dimensions:** diameter 66 mm – length 170 mm • **Weight:** 480 gr • **3 CREE XPG2 LEDs** • **Battery:** Li-Ion 26650 inside the torch, rechargeable via Micro-USB • **Burn-time:** 2 hours at max power – 5 hours at reduced power • **Width of light beam:** zoom adjustable, from 12° to 75° • **On switch:** electromagnetic system • **Operating modes:** max power, reduced power, flashing • **Maximum operating depth:** 100 mt • **Light intensity:** 1500 Lumens.

R30 • 0500022

CODE 020000

# R20



## FEATURES:



900 Lumens of light intensity.



Battery charging system via USB cable.



Option to vary the light beam from 12° to 75°.

Aluminum dive torch with tempered optical glass • **Dimensions:** diameter 55 mm – length 188 mm • **Weight:** 420 gr • **1 CREE XML2-U3 LED** • **Battery:** Li-Ion 26650 inside the torch, rechargeable via Micro-USB • **Burn-time:** 3 hours at max power – 6 hours at reduced power • **Width of light beam:** zoom adjustable, from 12° to 75° • **On switch:** electromagnetic system • **Operating modes:** max power, reduced power, flashing • **Maximum operating depth:** 100 mt • **Light intensity:** 900 Lumens.

R20 • 0500021

CODE 020000

# R5



## FEATURES:



500 Lumens of light intensity.



Battery charging system using USB cable.



Continuous light power adjustment system using button.

Aluminum dive torch with tempered optical glass • **Dimensions:** diameter 48 mm – length 165 mm • **Weight:** 300 gr • **1 CREE XPG2 LED** • **Battery:** Li-Ion 18650 inside the torch, rechargeable via Micro-USB • **Burn-time:** 2 hours at max power – 24 hours at reduced power • **Width of light beam:** zoom adjustable, from 12° to 75° • **On switch:** electromagnetic system • **Operating modes:** light intensity adjustable using magnetic switch • **Maximum operating depth:** 100 mt • **Light intensity:** 500 Lumens.

R5 • 0500005

CODE

020000

# R3



## FEATURES:



400 Lumens of light intensity.



Rechargeable battery.



Three-function light beam: maximum power, reduced power, and flashing.

Aluminum dive torch with tempered optical glass • **Dimensions:** diameter 42 mm – length 140 mm • **Weight:** 255 gr • **1 CREE XPG2 LED** • **Battery:** Li-Ion 18650 rechargeable via external charger with USB connection • **Burn-time:** 2 hours at max power – 8 hours at reduced power • **On switch:** electromagnetic system • **Operating modes:** max power, reduced power, flashing • **Maximum operating depth:** 100 mt • **Light intensity:** 400 Lumens.

R3 • 0500004

CODE 020000

## R2



**R2 • 0500015**

CODE 520000

**Type of batteries:** Four 1.5 V or 1.2 V AAA/LR03 rechargeable alkaline batteries (not included) • **Burn time:** 2.5 hrs at max power • **Maximum usage depth:** 100 meters • **Dimensions:** diameter 42 mm – length 143 mm • **Weight:** 256 g • **On switch:** electromagnetic system • **Seal:** Double radial seal O-ring + L-Ring • **Glass:** optical, tempered • **Light intensity:** 282 Lumens.



Universal clip (optional)

**UNIVERSAL TORCH STRAP**

CODE 1110040000000

## R1



**Type of batteries:** Three 1.5 V or 1.2 V AAA/LR03 rechargeable alkaline batteries (not included) • **Burn time:** 3 hrs at max power • **Maximum usage depth:** 100 meters • **Dimensions:** diameter 38 mm – length 127 mm • **Weight:** 138 g • **On switch:** pressure switch • **Seal:** Double radial seal O-ring + L-Ring • **Glass:** PMMA (acrylic glass) • **Three modes:** max power, reduced power, and intermittent flash • **Light intensity:** 150 Lumens.

**R1 • 0500003**

CODE 520000



# Q5



FEATURES:



700 Lumens of light intensity.



3 Cree XPG R5 LEDs.



Torch carry strap.

**Type of batteries:** Eight 1.5 V AA/R6 alkaline batteries (not included) • **Burn time:** 3 hrs at max power • **Maximum usage depth:** 60 m • **Dimensions:** diameter 60 mm – length 180 mm • **Weight:** 457 gr (with batteries) • **On switch:** electromagnetic system • **Seal:** Double radial seal O-ring + L-Ring • **Glass:** clear polycarbonate • **Lumens:** 700 Lumens.

**Q5 • 0500020**

CODE

520000

# TECHNICAL CHARACTERISTICS

	R30	R20	R5	R3	R2	R1	Q5
							
CODE	0500022	0500021	0500005	0500004	0500015	0500003	0500020
CODE EXTENSION	520000	520000	020000	020000	520000	520000	520000
COLOR	Anthracite	Anthracite	Anthracite	Anthracite	Anthracite	Anthracite	Black
TECHNOPOLYMER BODY							✓
METAL BODY	✓	✓	✓	✓	✓	✓	
THREE MODES	✓	✓		✓		✓	
PROGRESSIVE INTENSITY ADJUSTMENT			✓				
LIGHT FROM 3 LEDS	✓						✓
DOUBLE RADIAL SEAL O-RING	✓	✓	✓	✓	✓	✓	✓
MAGNETIC SWITCH	✓	✓	✓	✓	✓		✓
MECHANICAL SWITCH						✓	
TORCH STRAP	✓	✓	✓	✓	✓	✓	✓
LIGHT FROM 1 LED		✓	✓	✓	✓	✓	
TEMPERED OPTICAL GLASS	✓	✓	✓	✓	✓		
BURN-TIME	at max power 2hr at min power 5hr	at max power 3hr at min power 6hr	at max power 2hr at min power 24hr	at max power 2hr15min at min power 8hr	2.5hr-22hr	3hr	at max power 3hr
MAXIMUM OPERATING DEPTH	100	100	100	100	100	100	60
DIAMETER – LENGTH	66-170	55-188	48-165	42-140	42-143	38-126.5	62.5
SEALS	O-ring seal	O-ring seal	O-ring seal	O-ring seal	Double seal	Double seal	Double seal
WEIGHT (GR)	480	420	300	255	256*	138*	457
WATTS (W)	15	10	5	5	3	3	15
° KELVIN (°K)	5700~7300	5700~7300	5700~7300	5700~7300	6500	6500	5700~7300
LUMENS RATING (LM)	Maximum 1500 Reduced 450	Maximum 900 Reduced 270	Maximum 500 Reduced 50	Maximum 400 Reduced 120	282	150	Maximum 700 Reduced 200
WIDTH OF THE LIGHT BEAM	12° to 75°	12° to 75°	12° to 75°	9°	6.2°	6.1°	10°



## Regulator technology

Seac Sub regulators are made using some of the most reliable and precise production methods. This is why our company has made sizable investments in the design and internal manufacture of its regulators. Assembled, calibrated, and tested one by one, they undergo a series of quality control phases to certify them even under the most recent CE EN 250 standards. Safety in the water, first and foremost.

# DX200 ICE



## FEATURES:



Anti-icing kit.

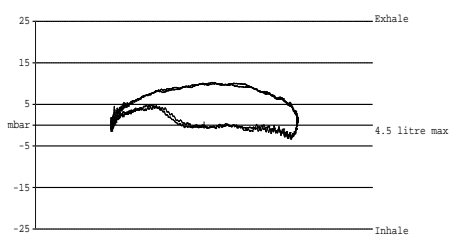


Pull-out stainless steel valve seat designed to increase safety and make overhauls easier.



Option to regulate inhalation effort and the Venturi Effect (Dive/Pre Dive).

Breathing effort at 50 msw and 50 bar: 0.63 J/l.



**First stage body material:** forged brass with sand-blasted chrome finish • **First stage characteristics:** high-performance balanced diaphragm design, fully insulated against the outside, maximum safety, and easy to overhaul • **Second stage material:** technopolymers and elastomers, with metal components and cover manufactured with scratch-resistant Luxury Technology treatment • **Second stage characteristics:** option to regulate both breathing effort and the Venturi Effect • **HP ports:** 2 • **LP ports:** 4, of which 2 angled at 20° and 2 angled at 30°.

### DX200 ICE • 0350072

CODE	002004	002003	002005
MODEL	ICE INT	ICE DIN	ICE DIN
	230 BAR	230 BAR	300 BAR
WEIGHT (GR)	1210	1040	1059

### DX200 ICE 1<sup>ST</sup> STAGE • 0350075

CODE	002004	002003	002005
MODEL	ICE INT	ICE DIN	ICE DIN
	230 BAR	230 BAR	300 BAR
WEIGHT (GR)	827	647	665

### DX200 ICE 2<sup>ND</sup> STAGE • 0350078

CODE	000000
MODEL	-
WEIGHT (GR)	210

# DX200



## FEATURES:



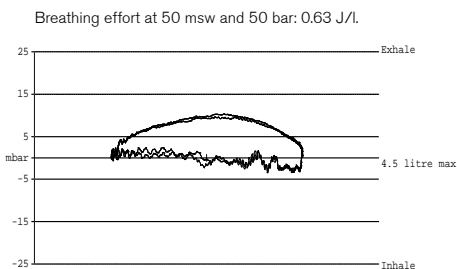
Option to adjust intermediate pressure from the outside.



There are no holes on the front cover, which prevents free flow even when facing strong currents (OWS System).



Option to regulate inhalation effort and the Venturi Effect (Dive/Pre Dive).



**First stage body material:** forged brass with sand-blasted chrome finish • **First stage characteristics:** high-performance balanced diaphragm design, maximum safety, and easy to overhaul (option to adjust intermediate pressure from the outside) • **Second stage material:** technopolymers and elastomers, with metal components and cover manufactured with corrosion- and scratch-resistant Luxury Technology treatment • **Second stage characteristics:** option to regulate both breathing effort and the Venturi Effect • **HP ports:** 2 • **LP ports:** 4, of which 2 angled at 20° and 2 angled at 30°.

### DX200 • 0350072

CODE	000004	000003
MODEL	INT 230 BAR	DIN 230 BAR
WEIGHT (GR)	1140	990

### DX200 1<sup>ST</sup> STAGE • 0350075

CODE	000004	000003
MODEL	INT 230 BAR	DIN 230 BAR
WEIGHT (GR)	747	576

### DX200 2<sup>ND</sup> STAGE • 0350078

CODE	000000
MODEL	-
WEIGHT (GR)	210

# MX100



## FEATURES:



Option to adjust intermediate pressure from the outside.

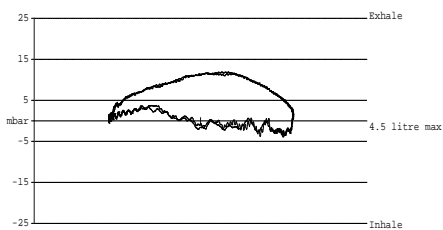


There are no holes on the front cover, which prevents free flow even when facing strong currents (OWS System).



Option to regulate the Venturi effect (Dive/Pre Dive).

Breathing effort at 50 msw and 50 bar: 0.72 J/l.



**First stage body material:** chrome-plated polished brass • **First stage characteristics:** balanced diaphragm design • **Second stage material:** technopolymers, elastomers, and cover manufactured with corrosion- and scratch-resistant Luxury Technology treatment • **Second stage characteristics:** the new lever ensures reduced friction, making inhaling very fluid and linear • **HP ports:** 2 • **LP ports:** 4.

### MX100 • 0350071

CODE	000004	000003
MODEL	INT 230 BAR	DIN 230 BAR
WEIGHT (GR)	1090	940

### MX100 1<sup>ST</sup> STAGE • 0350076

CODE	000004	000003
MODEL	INT 230 BAR	DIN 230 BAR
WEIGHT (GR)	796	596

### MX100 2<sup>ND</sup> STAGE • 0350077

CODE	000000
MODEL	-
WEIGHT (GR)	200

# P-SYNCHRO



## FEATURES:



Shockproof rubber cap on the first stage.

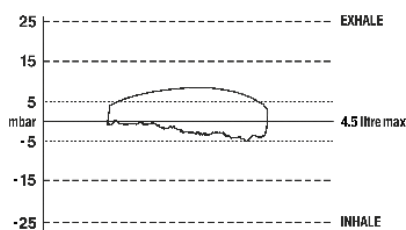


Option to regulate the Venturi effect (Dive/Pre Dive).



Functional Easy Purge System cap.

Breathing effort at 50 msw and 50 bar: 0.91 J/l.



**First stage body material:** polished chrome-plated brass • **Second stage body material:** ultralight technopolymers • **HP Ports:** 1 • **LP ports:** 4 • **First stage features:** compressed-piston • **Second stage features:** made using ultralight technopolymers, option to regulate the Venturi effect.

### P-SYNCHRO • 0350029

CODE	000004	000003
MODEL	INT 230 BAR	DIN 230 BAR
WEIGHT (GR)	1040	850

### P-SYNCHRO 1<sup>ST</sup> STAGE • 0350009

CODE	000004	000003
MODEL	INT 230 BAR	DIN 230 BAR
WEIGHT (GR)	650	480

### P-SYNCHRO 2<sup>ND</sup> STAGE • 0350033

CODE	000000
MODEL	-
WEIGHT (GR)	200

# X100 OCTO

**X100 Octo Material:** technopolymers and elastomers, and cover manufactured with corrosion- and scratch-resistant Luxury Technology treatment.



FEATURES:



There are no holes on the front cover, which prevents free flow even when facing strong currents (OWS System).



Option to regulate the Venturi Effect (Dive/Pre Dive).

**X100 OCTO • 0350074**

CODE	000000
WEIGHT (GR)	363

**X100 OCTO 2<sup>ND</sup> STAGE • 0350079**

CODE	000000
WEIGHT (GR)	180

# OCTO SYNCHRO

**Synchro Octo Material:** ultralight technopolymers.



FEATURES:



Option to regulate the Venturi Effect (Dive/Pre Dive).



Functional Easy Purge System cap (Synchro Octo).

**OCTO SYNCHRO • 0350038**

CODE	000000
WEIGHT (GR)	390

**OCTO SYNCHRO 2<sup>ND</sup> STAGE • 0350042**

CODE	000000
WEIGHT (GR)	200



# SET DX200 ICE



Set including DX200 ICE regulator and X100 Octopus. Mate Octo HD bag included.

**SET DX200 ICE • 0350090**

CODE	002005
MODEL	300 DIN
WEIGHT (GR)	1422

# SET MX100



Set including MX100 regulator and X100 Octopus, available in DIN and INT Version. Mate Octo HD bag included.

**SET MX100 • 0350089**

CODE	000004	000003
MODEL	INT 230 BAR	DIN 230 BAR
WEIGHT (GR)	1159	959

# RENTAL KIT



## FEATURES:



Shockproof rubber cap on the first stage.



Option to regulate the Venturi effect (Dive/PreDive).



Functional Easy Purge System cap.

**First stage body material:** polished chrome-plated brass • **Second stage body material:** ultralight technopolymers • **HP Ports:** 1 • **LP ports:** 4 • **First stage features:** compressed-piston • **Second stage features:** made using ultralight technopolymers, option to regulate the Venturi effect.

### RENTAL KIT • 0350028

CODE	000004	000003
MODEL	INT 230 BAR	DIN 230 BAR
WEIGHT (GR)	-	-

FIRST STAGE

SECOND STAGE

**D ICE 1<sup>ST</sup> STAGE**  
2 HP Ports  
4 LP Ports



**D 1<sup>ST</sup> STAGE**  
2 HP Ports  
4 LP Ports



X200



**M 1<sup>ST</sup> STAGE**  
2 HP Ports  
4 LP Ports



X100



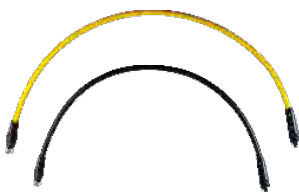
**P 1<sup>ST</sup> STAGE**  
1 HP Port  
4 LP Ports



SYNCHRO



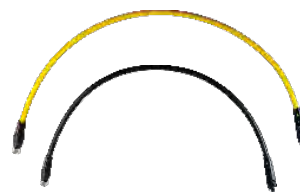
**HIFLEX REGULATOR HOSE**



**Standard:** 780 mm black M 3/8" • **Octopus:** 1000 mm yellow M 3/8".

CODE	0390035000000	0390036000000
MODEL	hiflex 78 cm	hiflex 100 cm

**REGULATOR HOSE**



**Standard:** 770 mm black M 3/8" • **Octopus:** 1000 mm yellow M 3/8" • **Octopus:** 2000 mm yellow M 3/8".

CODE	0390033000000	0390034000000	0390124000000
MODEL	77 cm	100 cm	200 cm

## DIN/INT CONNECTOR



DIN regulator to INT valve connector.

CODE 111005000000

## DIN PROTECTIVE CAP



Universal DIN first stage protective cap.

CODE 111001800000

## MATE OCTO HD



**Material:** 600D Polyester with PVC covering • **Dimensions:** 30 x 10 x 28 cm • **Volume:** 8.4 L.

CODE 0920002006000

## REGULATOR MOUTHPIECE



Universal regulator mouthpiece.



Regulator mouthpiece clamp

● BLACK 1110057520000  
○ TRANSPARENT 1110058800000

**REGULATOR MOUTHPIECE CLAMP**  
CODE 0390067000000

## HOSE GUARD



Universal hose guard.

CODE 1120078520000

## ROUND OCTOPUS HOLDER



Round octopus holder.

CODE 1110052000000

# TECHNICAL CHARACTERISTICS:

	DX200		DX200 ICE			MX100		P-SYNCHRO	
CODE	0350072		0350072			0350071		0350029	
CODE DETAIL	000004	0000003	002004	002003	002005	000004	000003	000004	000003
COMPENSATED PISTON								✓	✓
1ST STAGE BALANCED MEMBRANE	✓	✓	✓	✓	✓	✓	✓		
ANTIFREEZE SYSTEM			✓	✓	✓				
INT 1ST STAGE	✓		✓			✓		✓	
DIN 1ST STAGE		✓		✓	✓		✓		✓
HP PORTS	2	2	2	2	2	2	2	1	1
LP PORTS	4	4	4	4	4	4	4	4	4
BALANCED 2ND STAGE	✓	✓	✓	✓	✓				
DIVE/PRE-DIVE	✓	✓	✓	✓	✓	✓	✓	✓	✓
CAP W/SCRATCH-RESISTANT TREATMENT (LUXURY TECHNOLOGY)	✓	✓	✓	✓	✓	✓	✓		
BAR	230	230	230	230	300	230	230	230	230
WEIGHT (G)	1140	970	1210	1040	1059	1090	940	1040	850
COLD WATER TYPE APPROVAL (<10°)	✓	✓	✓	✓	✓	✓	✓	✓	✓

	X100 OCTO	OCTO SYNCHRO
CODE	0350074	0350038
CODE EXTENSION	000000	000000
DIVE/PRE-DIVE	✓	✓
CAP W/SCRATCH-RESISTANT TREATMENT (LUXURY TECHNOLOGY)	✓	
WEIGHT (G)	363	390
COLD WATER TYPE APPROVAL (<10°)	✓	✓



## **Diving instrument technology**

The analog devices that divers must always carry with them are very important for their safety. This is why at Seac, we are committed to checking and testing every component in accordance with the standards of current law. From the compass to the various consoles and steel tanks, Seac products are manufactured in Italy and guarantee customers durability, efficiency, and safety over time.

## COMPACT PRESSURE GAUGE

**NEW**



**Internal system:** spiral • **Case:** molded brass, chrome-plated exterior • **Hose:** 800 mm high-performance HP • **Glass:** high-performance polycarbonate • **Face:** luminescent • **Scale:** 0-400 BAR (10 BAR increments).

CODE	0600010000000	0600010003000
UNITS	BAR	PSI

## CONSOLLE 2

**NEW**



**Pressure gauge:** with internal spiral system • **Depth** • **Internal system:** Bourdon gauge in oil bath • **Face:** luminescent • **Scale:** 0-70 m (1 m increments).

CODE	0600011000000	0600011005000
UNITS	BAR/M	FEET/PSI

## CONSOLLE 3

**NEW**



Includes pressure gauge with internal spiral system, Depth gauge, and Compass.

CODE	0600012000000	0600012005000
UNITS	BAR/M	FEET/PSI

## WRIST COMPASS

**NEW**



**Internal system:** pivoting, in air • **Case:** high-performance ABS • **Glass:** High-performance polycarbonate • **Face:** luminescent • **Scale:** 0-360° (10 degree increments).

CODE	0600013000000
------	---------------



# TANKS



34CRM04 Chromium-Molybdenum Alloy Steel. Manufacturing cycle from plate • **Valves:** single connection and double connection, chrome-plated satin-finished brass with DIN-INT connector with M25X2 thread pitch • **External treatment:** sand-blasting with fine grit, one 90-Micron protective zinc layer, 5 base layers of dual-component epoxy, 3 polyurethane finish layers, paint treated with "wet on wet" system, black and white segmenting on top in accordance with EC regulations.

## TANKS

CODE	0650012003018	0650012006018	0650015003018	0650015006018
LT	12	12	15	15
BAR	200	200	200	200
VALVE VERSION	single connection M25X2	double connection M25X2	single connection M25X2	double connection M25X2
DIAMETER (mm)	203	203	203	203
HEIGHT (mm)	600	600	690	690

## SINGLE CONNECTION VALVES



Single connection valves for single tank. M25X2 thread. INT/DIN connector.

CODE 0670021003000

## DUAL CONNECTOR VALVES



Dual connection valves for single tank. M25X2 thread. INT/DIN connector.

CODE 0670021006000

## HP+SWIVEL HOSE

Universal pressure gauge hose.



CODE	0630002000000	0630003000000
	80 cm	swivel

## DIN/INT ADAPTOR

DIN/INT Adaptor.



CODE	0690022 000000
------	----------------

## BACKPACK

Backpack complete with straps, suitable for any type of single tank.



CODE	0690001000000
------	---------------

## TANK HANDLE

Universal single-tank handle.



CODE	1110053000000
------	---------------

## TANK FASTENING STRAPS

Warning: 2 are needed to fasten the tank correctly.



CODE	0480029000000	0480027000000
	single tank (with non-slip)	dual tank

## TANK BOOT

Boot for single tank. Long and short versions.



CODE	0670024000005	0670024000009
	short 7/10/12 Lt	long 12/15/18 Lt

## TANK NET



### TANK NET

● BLACK	1080001015520	1080001019520	1080001023520	1080002023520	1080001027520	1080001031520	
	LT	7 LT	10 LT	12 LT/long	12 LT/short	15 LT	18 LT



## **BCD technology**

Seac is known internationally for the high quality of our BCDs. Sturdy, durable, and delivering excellent buoyancy lift, the BCDs we manufacture are the result of our technical and qualitative research into materials and cutting-edge new materials.

# PRO 2000



## FEATURES:



Three-dimensional inflating bag.



Pockets and shoulder straps in 1000D Cordura.



AHS Adjustment Harness System anchors the shoulder straps to the backpack.

BCD with innovative three-dimensional bladder and independent, disengageable harness. Frame to Back system with individually adjustable shoulder straps anchored to the backpack. Zip-closure pockets and Q&S quick-release weight system. Foldaway backup pocket and rear weight pockets standard (Trim Pocket).

• **Bladder external material:** Heavy Duty 1000D PU-coated nylon • **Bladder internal material:** PU-coated 420 Nylon • **Dump valves:** 3, with pull cord • **“D” rings:** Five 50-mm curved + two 25-mm straight in black anodized aluminum • **Dry weight (size L):** 3900 gr (including hose and weight pockets).

### PRO 2000 • 0420035

CODE	000025	000040	000055	000080	000105	000125
SIZE	XS	S	M	L	XL	XXL
LIFT (kg)	13.2	13.2	17.3	20.4	24.4	24.4
LIFT (Lbs)	29	29	38	45.6	53.7	53.7

# SMART



## FEATURES:



Weight pockets with Safety Release system.



Stainless steel "D" rings.



Inflator with sphere control system.

Traditional BCD in 1000D Cordura fabric, zip-closure pockets and Safety Release system for quickly releasing weights. Models with stainless steel rings and chest adjustment to two different positions.

• **Bladder external material:** PU-coated 1000D Cordura • **Bladder internal material:** PU-coated 500D Cordura • **Dump valves:** 3, with pull cord • **"D" rings:** Six 25-mm in stainless steel • **Dry weight (size L):** 3100 g (including hose).

### SMART • 0420034

CODE	000015	000025	000040	000055	000080	000105
SIZE	XXS	XS	S	M	L	XL
LIFT (kg)	9.7	9.7	11.3	15.4	17.4	18.4
LIFT (Lbs)	21.4	21.4	24.7	33.7	40.3	40.3

# NICK



FEATURES:

- A Q&S weight pocket system.
- B Foldaway pockets.
- C Knife mount.

BCD with 500D Cordura rear-volume bladder and harness featuring the Frame to Back system. Foldaway pockets and Q&S weight system.  
**• Bladder external material:** PU-coated 500D Cordura • **Bladder internal material:** PU-coated 500D Cordura • **Dump valves:** 3, with pull cord • **“D” rings:** Two 25-mm + four 38-mm in stainless steel • **Dry weight (size L):** 3500 gr (including hose and weight pockets).

**NICK • 0420001**

CODE	000025	000040	000055	000080	000105
SIZE	XS	S	M	L	XL
LIFT (kg)	20.4	20.4	20.4	20.4	20.4
LIFT (Lbs)	44.9	44.9	44.9	44.9	44.9

# EGO



## FEATURES:



1000D Cordura to ensure maximum scratch resistance.



Ample pockets with flap and Velcro closure.



Size shown on the outside for easy identification (from XXXS to XL).

Traditional BCD made entirely in 1000D Cordura, including the bladder, pockets, and shoulder pads. Stainless steel rings and slots for housing the Octopus or dive instruments. Model with chest adjustment to two different positions.

• **Bladder external material:** PU-coated 1000D Cordura • **Bladder internal material:** PU-coated 1000D Cordura • **Dump valves:** 3, with pull cord • **“D” rings:** Four 25-mm stainless steel • **Dry weight (size L):** 3200 g (including hose).

### EGO • 0420005

CODE	000005	000015	000025	000040	000055	000080	000105
SIZE	XXXS	XXS	XS	S	M	L	XL
LIFT (kg)	9.7	9.7	10.2	11.2	15.3	17.3	18.3
LIFT (Lbs)	21.4	21.4	22.5	24.7	33.7	40.3	40.3

# CLUB

NEW



## FEATURES:

A

Shoulder straps feature our exclusive triple adjustment system

B

Size shown on the outside for easy identification (from XXXS to XL).

C

Buoyancy bag in sturdy 500 Denari nylon, super resilient and lightweight.

Traditional BCD made of 500D Cordura. Designed to be versatile, and suitable for schools and dive centers. The shoulder straps feature our exclusive Triple Adjustment system, which allows the buckle to move to three different heights within the same size.

• **Bladder external material:** PU-coated 500D Cordura • **Bladder internal material:** PU-coated 500D Cordura • **Dump valves:** 3, with pull cord • **“D” rings:** 4 in technopolymer • **Dry weight (size L):** 3100 g (including hose).

### CLUB • 0420036

CODE	000005	000015	000025	000040	000055	000080	000105
SIZE	XXXS	XXS	XS	S	M	L	XL
LIFT (kg)	9.7	9.7	10.2	11.2	15.3	17.3	18.3
LIFT (Lbs)	21.4	21.4	22.5	24.7	33.7	40.3	40.3



# RENTAL KIT CLUB



Dive package designed for diving centers and schools: includes a Club BCD and a P-Synchro regulator with Octopus and pressure gauge. Balanced piston regulator first stage. Second stage in sturdy and lightweight technopolymers.

RENTAL KIT CLUB	DIN • 1650002			INT • 1650001			
CODE	000005	000015	000025	000040	000055	000080	000105
SIZE	XXXS	XXS	XS	S	M	L	XL
LIFT (kg)	9.7	9.7	10.2	11.2	15.3	17.3	18.3
LIFT (Lbs)	21.4	21.4	22.5	24.7	33.7	40.3	40.3

## ADDITIONAL WEIGHT POCKET



Rear weight pocket for fastening directly to the tank strap. Capacity up to 2 kg.

CODE 0480008000000  
Kg 2

## Q&S WEIGHT POCKET



Quick-release weight pocket with Q&S system. Capacity up to 4 kg (S, M) and 6 kg (L, XL, XXL).

CODE 0480423000000 0480424000000  
Kg 4 6

## BCD HOSE



Male 3/8" 670 mm

CODE 0480014000000  
cm 67

## SCS INFLATOR



Inflator with sphere control system.

CODE 0480018000000 0480019000000  
BUTTONS chrome-plated metal standard

## INFLATOR



Standard complete inflator unit.

CODE 0480015000000

## OVER-EXPANSION RELIEF VALVE

Complete over-expansion relief valve for BCDs.



CODE 0480036000000 0480035000000  
60 cm line 28 cm line

## ERGONOMIC HOSE RETAINER

Plastic hose retainer clip.



CODE 0480256000000

## DOUBLE HOOK CLIP

Stainless steel spiral cord with double stainless steel carabiners and double fastening hook.



CODE 1110027000000

## DOUBLE CLIP

Stainless steel spiral cord with double plastic carabiner.



CODE 1110028000000

## SIMPLE RETRACTOR

Stainless steel retractor cable.



CODE 1110022000000

## ELASTIC RING CLIP

Retaining carabiner for octopus with super elastic latex ring.



CODE 1110031000000

# TECHNICAL CHARACTERISTICS

	PRO 2000	SMART	NICK	EGO	CLUB
SAFETY RELEASE SYSTEM INTEGRATED WEIGHT		✓			
Q&S WEIGHT SYSTEM INTEGRATED WEIGHT	✓		✓		
ADJUSTABLE HARNESS SYSTEM	✓				
ADDITIONAL WEIGHT POCKET	✓	optional	optional	optional	optional
SOFT BACK PADDING	✓	✓	✓	✓	✓
3D BAG	✓				
FRAME TO BACK SYSTEM	✓		✓		

BUOYANCY LIFT	SIZE	KG	-	-	-	-	-
		LBS	-	-	-	-	-
	XXXS	KG	-	-	-	7.2	7.2
		LBS	-	-	-	15.8	15.8
	XXS	KG	-	-	-	7.2	7.2
		LBS	-	-	-	15.8	15.8
	XS	KG	14.3	9.2	19.5	9.2	9.2
		LBS	31.5	20.2	43	20.2	20.2
	S	KG	14.3	9.2	19.5	9.2	9.2
		LBS	31.5	20.2	43	20.2	20.2
	M	KG	16.3	15.3	19.5	15.3	15.3
		LBS	35.9	33.7	43	33.7	33.7
	L	KG	18.3	16.3	19.5	16.3	16.3
		LBS	40.3	35.7	43	35.7	35.7
XL	KG	21.4	18.3	19.5	18.3	18.3	
	LBS	47.1	40.3	43	40.3	40.3	
XXL	KG	21.4	18.3	-	-	-	
	LBS	47.1	40.3	-	-	-	
D-RING	METAL		7	6	6	4	-
	TECHNOPOLYMER		-	-	-	-	4
WEIGHT	SIZE	GR	-	-	-	-	-
	XXXS	GR	-	-	-	-	-
	XXS	GR	-	-	-	-	-
	XS	GR	4100	-	-	-	-
	S	GR	4100	3900	3200	2800	3900
	M	GR	4200	4100	3200	3000	4100
	L	GR	4200	4200	3300	3000	4200
	XL	GR	4300	4300	3400	3200	4300
XXL	GR	4300	4300	3500	-	4300	



## Suit technology

From preliminary drawings to the final detailed design, our wetsuit production department monitors every step in the creation of one of the top products in the company catalog. Our focus on detail, research into materials, close attention, and in-depth quality control make Seac wetsuits true icons on the dive market for dry suit, semi-dry suit, and wetsuit models.

# WARMDRY

man & lady

CE

4 mm



## UNIFLEECE



## FEATURES:



Semi-rigid boots can be turned inside out.



Convenient large pocket in 1000D Cordura, expandable and with Velcro flap.



Total Protection on the shoulders, elbows, knees, and lower back, in ultras resistant material.

Dry suit • **External coating:** Heavy Duty Poly PK + Powertex • **Lining:** Nylon • **Zip:** DRY BDM in metal with protective flap • **Stitching:** External blind stitching • Internal neoprene Tape • **Neck:** Glide Skin • **Closure system on the wrists:** Aquastop Smooth Skin • Textile bag, hood, hose and suspenders included.

### WARMDRY MAN

CODE <b>0060001</b> +	009040	009055	009080	009091	009105	009121	009125	009141	009145	009156	009160
SIZE	S	M	L	L2P	XL	XL2P	XXL	XXL2P	XXXL	XXXL2P	XXXXL
BOOTS	41/42	43/44	44/45	45/46	45/46	46/47	46/47	47/48	47/48	48/49	48/49

### WARMDRY LADY

CODE <b>0060001</b> +	029025	029040	029055	029080	029105	029125
SIZE	XS	S	M	L	XL	XXL
BOOTS	36/37	37/38	38/39	39/40	41/42	42/43

### UNIFLEECE

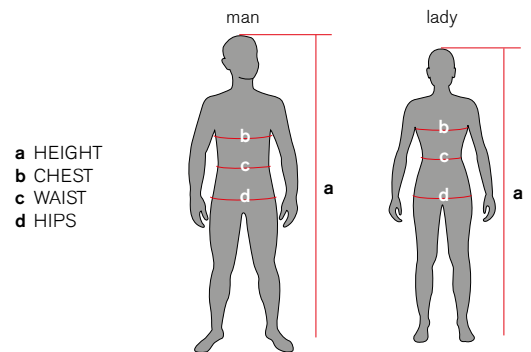
CODE <b>0110002</b> +	000025	000040	000055	000080	000105	000125	000145
SIZE	XS	S	M	L	XL	XXL	XXXL

### DRY SUIT HOSE

CODE	0390037000000
cm	75

# SUITS SIZE CHART:

	SIZE/AGE	HEIGHT a		WEIGHT		CHEST b		WAIST c		HIPS d		BOOTS
		cm	inch	kg	lb	cm	inch	cm	inch	cm	inch	
MAN	<b>S</b>	167-172	65.7-67.7	60-69	132-152	94-98	25.1-38.5	76-80	29.9-31.4	88-92	34.6-36.2	26
	<b>M</b>	172-176	67.7-69.2	68-77	149-169	98-102	38.5-40.1	80-84	31.4-33.0	92-96	36.2-37.7	27
	<b>L</b>	176-180	69.2-70.8	76-85	167-187	102-106	40.1-41.7	84-88	33.0-34.6	96-100	37.7-39.3	28
	<b>L2P</b>	176-180	69.2-70.8	84-94	185-207	112-118	44.0-46.4	94-100	37.0-39.3	106-112	41.7-44.0	28
	<b>XL</b>	180-184	70.8-72.4	84-94	185-207	106-110	41.7-43.3	88-92	34.6-36.2	100-104	39.3-40.9	29
	<b>XL2P</b>	180-184	70.8-72.4	93-103	205-227	118-124	45.6-48.8	100-106	39.3-41.7	112-118	44.0-46.4	29
	<b>XXL</b>	184-188	72.4-74.0	93-103	205-227	112-118	44.0-46.4	94-100	37.0-39.3	106-112	41.7-44.0	30
	<b>XXL2P</b>	184-188	72.4-74.0	102-114	224-251	124-130	48.0-49.6	106-110	40.9-42.5	118-122	45.6-48.0	30
	<b>XXXL</b>	188-192	74.0-75.5	102-114	224-251	118-124	45.6-48.8	100-106	39.3-41.7	112-118	44.0-46.4	31
	<b>XXXL2P</b>	188-192	74.0-75.5	110-125	242-275	130-134	51.1-52.7	112-116	44.0-45.6	124-130	48.8-51.5	31
<b>XXXXL</b>	192-196	75.5-77.1	110-125	242-275	124-130	48.8-50.1	106-112	41.7-44.0	118-124	46.8-48.8	31	
LADY	<b>XS</b>	156-160	61.4-62.9	40-49	88-108	84-88	33.0-34.6	68-72	26.7-28.3	84-88	33.0-34.6	22
	<b>S</b>	160-164	62.9-64.5	47-56	103-123	88-92	34.6-36.2	72-76	28.3-29.9	88-92	34.6-36.2	23
	<b>M</b>	164-168	64.5-66.1	54-63	119-138	92-96	36.2-37.7	76-80	29.9-31.4	92-96	36.2-37.7	24
	<b>L</b>	168-172	66.1-67.7	61-70	134-154	96-100	37.7-39.3	80-84	31.4-33.0	96-100	37.7-39.3	25
	<b>XL</b>	172-178	67.7-70.0	68-77	149-169	100-104	39.3-40.9	84-88	33.0-34.6	100-104	39.3-40.9	26
	<b>XXL</b>	176-180	69.2-70.8	77-89	169-196	104-108	40.9-42.5	88-92	34.6-36.2	104 - 108	40.9-42.5	27



## WARMDRY

	MAN	LADY
MILLIMETRES	4	4
SIZE	from S to XXXXL	from XS to XXL
BOOTS	from 41/42 to 47/48	from 36/37 to 41/42
GLIDESKIN COLLAR	✓	✓
SUNDRIES POCKET	✓	✓
360° SI-TECH INFLATOR VALVE	✓	✓
SI-TECH DUMP VALVE	✓	✓
SMOOTH SKIN CUFFS	✓	✓
SEMIRIGID BOOTS	✓	✓
PREFORMED ANATOMICAL CUT	✓	✓

# MASTERDRY

man

CE

7 mm



## FEATURES:



Rear horizontal Master Seal zip to ensure the utmost flexibility and comfort when moving.



Thermal Fiber Plush: highly elastic, dries quickly, warm and comfortable against the skin.



PAD Protection in the back area.

Semi-dry suit in superelastic neoprene with rear zip. Model with separate hood, included, with Air Draining system, double cone cuffs and ankles in ultra-elastic smooth skin. Three-dimensional pocket with zip closure.

• **External coating:** 300% Extraflex superelastic nylon • **Lining:** Thermal Fiber Plush • **Zip:** Titex Master Seal • **Cuffs and ankles:** double cone ultra-elastic Smooth Skin • **Hood:** separate, included, with "Air Draining" system.

## MASTERDRY MAN

CODE 0010048 +	003040	003055	003065	003080	003090	003105	003120	003125	003145	003160
SIZE	S	M	MT	L	LT	XL	XLT	XXL	XXXL	XXXXL



# MASTERDRY

lady

CE

7 mm



## FEATURES:



Double cone ultra-elastic Smooth Skin.



Ample neoprene pocket with zip and hood fastening clip.



Pads on the shoulders, knees, and lower back.

Semi-dry suit in superelastic neoprene with rear zip. Model with separate hood, included, with Air Draining system, double cone cuffs and ankles in ultra-elastic smooth skin. Three-dimensional pocket with zip closure.

• **External coating:** 300% Extraflex superelastic nylon • **Lining:** Thermal Fiber Plush • **Zip:** Titex Master Seal • **Cuffs and ankles:** double cone ultra-elastic Smooth Skin • **Hood:** separate, included, with "Air Draining" system.

## MASTERDRY LADY

CODE <b>0010048</b> +	023025	023040	023055	023080	023105	023125
SIZE	XS	S	M	L	XL	XXL

# KOMODA 7 MM

man & lady

CE

7 mm



VEST FLEX 5 mm



FEATURES:



Water Barrier System to waterproof the zipper.



Knee pads in scratch-resistant polyurethane.

7-mm one-piece suit with rear YKK zip, stainless steel sliding tab, made in superelastic double-lined Yamamoto 38 neoprene. The special rear Water Barrier System closure minimizes water seepage. Model with Aquastop at the cuffs and ankles thanks to the double cone system and zip closure.

**KOMODA 7 MM MAN & FLEX VEST 5 MM MAN**

CODE 7 MM	<b>0010083</b> +	003040	003055	003080	003085	003090	003105	003115	003120	003125	003135	003140	003145	003150	003160
CODE VEST	<b>0010085</b> +	007040	007055	007080	007085	007090	007105	007115	007120	007125	007135	007140	007145	007150	007160
SIZE		S	M	L	LP	LT	XL	XLP	XLT	XXL	XXLP	XXLT	XXXL	XXXLP	XXXXL

**KOMODA 7 MM LADY & FLEX VEST 5 MM LADY**

CODE 7 MM	<b>0010083</b> +	023025	023040	023055	023060	023080	023085	023105	023115	023125
CODE VEST	<b>0010002</b> +	027025	027040	027055	027060	027080	027085	027105	027115	027125
SIZE		XS	S	M	MP	L	LP	XL	XLP	XXL

# KOMODA 5 MM

man & lady

CE

5 mm



VEST FLEX 5 mm



FEATURES:



Yamamoto 38 rubber with honeycomb structure: advanced elasticity, excellent heat insulation, and unparalleled light weight.



Zip closure at the cuffs and ankles.

5-mm one-piece suit with rear YKK zip, stainless steel sliding tab, made in superelastic double-lined Yamamoto 38 neoprene. The special rear Water Barrier System closure minimizes water seepage. Model with Aquastop at the cuffs and ankles thanks to the double cone system and zip closure.

**KOMODA 5 MM MAN & FLEX VEST 5 MM MAN**

CODE 5 MM <b>0010083</b> +	007040	007055	007080	007085	007090	007105	007115	007120	007125	007135	007140	007145	007150	007160
CODE VEST <b>0010085</b> +	007040	007055	007080	007085	007090	007105	007115	007120	007125	007135	007140	007145	007150	007160
SIZE	S	M	L	LP	LT	XL	XLP	XLT	XXL	XXLP	XXLT	XXXL	XXXLP	XXXXL

**KOMODA 5 MM LADY & FLEX VEST 5 MM LADY**

CODE 5 MM <b>0010083</b> +	027025	027040	027055	027060	027080	027085	027105	027115	027125
CODE VEST <b>0010002</b> +	027025	027040	027055	027060	027080	027085	027105	027115	027125
SIZE	XS	S	M	MP	L	LP	XL	XLP	XXL

# LIBERA 7 MM

NEW

man & lady

CE

7 mm



VEST FLEX 5 mm



## FEATURES:

A

Rear YKK zip with stainless steel sliding tab.

B

Superanatomical preformed cut.

One-piece suit in 7-mm Yamamoto neoprene with combination of superelastic and stretch linings: • **Zip:** Rear YKK zip with stainless steel sliding tab • **Size:** anatomical and preformed on arms and legs • **Knee pads:** performed in scratch-resistant Powertex neoprene • **Cuffs and ankles:** aquastop system in single-lined superstretch Yamamoto smooth-skin neoprene • **Collar:** single-lined collar with special Injection-Hook Velcro closure to avoid damaging the lining and stitching.

### LIBERA 7 MM MAN & FLEX VEST 5 MM MAN

CODE 7 MM 0010200 +	230040	230055	230080	230105	230125	230145	230160
CODE VEST 0010085 +	007040	007055	007080	007105	007125	007145	007160
SIZE	S	M	L	XL	XXL	XXXL	XXXXL

### LIBERA 7 MM LADY & FLEX VEST 5 MM LADY

CODE 7 MM 0010200 +	330025	330040	330055	330080	330105	330125
CODE VEST 0010002 +	027025	027040	027055	027080	027105	027125
SIZE	XS	S	M	L	XL	XXL

# LIBERA 5 MM

NEW

man & lady

CE

5 mm



VEST FLEX 5 mm



## FEATURES:

A

Superstretch Yamamoto neoprene.

B

Seal at the cuffs and ankles in Yamamoto Smooth Skin.

One-piece suit in 5-mm Yamamoto neoprene with combination of superelastic and stretch linings: • **Zip:** Rear YKK zip with stainless steel sliding tab • **Size:** anatomical and preformed on arms and legs • **Knee pads:** performed in scratch-resistant Powertex neoprene • **Cuffs and ankles:** aquastop system in single-lined superstretch Yamamoto smooth-skin neoprene • **Collar:** single-lined collar with special Injection-Hook Velcro closure to avoid damaging the lining and stitching.

### LIBERA 5 MM MAN & FLEX VEST 5 MM MAN

CODE 5 MM	0010200 +	250040	250055	250080	250105	250125	250145	250160
CODE VEST	0010085 +	007040	007055	007080	007105	007125	007145	007160
SIZE		S	M	L	XL	XXL	XXXL	XXXXL

### LIBERA 5 MM LADY & FLEX VEST 5 MM LADY

CODE 5 MM	0010200 +	350025	350040	350055	350080	350105	350125
CODE VEST	0010002 +	027025	027040	027055	027080	027105	027125
SIZE		XS	S	M	L	XL	XXL

# LIBERA 3,5 MM

NEW

man & lady

3.5 mm



## FEATURES:

A

Superstretch Yamamoto neoprene.

B

Collar closure with scratch-resistant Velcro.

One-piece suit in 3.5-mm Yamamoto neoprene with combination of superelastic and stretch linings: • **Zip:** Rear YKK zip with stainless steel sliding tab • **Size:** anatomical and preformed on arms and legs • **Knee pads:** performed in scratch-resistant Powertex neoprene • **Cuffs and ankles:** aquastop system in single-lined superstretch Yamamoto smooth-skin neoprene • **Collar:** single-lined collar with special Injection-Hook Velcro closure to avoid damaging the lining and stitching.

### LIBERA 3,5 MAN

CODE 3.5 MM 0010200 +	265040	265055	265080	265105	265125	265145	265160
SIZE	S	M	L	XL	XXL	XXXL	XXXXL

### LIBERA 3,5 MM LADY

CODE 3.5 MM 0010200 +	365025	365040	365055	365080	365105	365125
SIZE	XS	S	M	L	XL	XXL

# ALIEN 5 MM

man & lady

CE

5 mm



VEST FLEX 5 mm



FEATURES:



Shoulders and knees reinforced in Powertex.



Excellent price-quality ratio.

One-piece rear YKK zip in double-lined neoprene. Aquastop on the wrists and ankles with Smooth Skin seal.

**ALIEN 5 MM MAN & VEST FLEX 5 MM MAN**

CODE 5 MM <b>0010037</b> +	007040	007055	007080	007105	007125	007145
CODE VEST <b>0010085</b> +	007040	007055	007080	007105	007125	007145
SIZE	S	M	L	XL	XXL	XXXL

**ALIEN 5 MM LADY & VEST FLEX 5 MM LADY**

CODE 5 MM <b>0010037</b> +	027025	027040	027055	027080	027105
CODE VEST <b>0010002</b> +	027025	027040	027055	027080	027105
SIZE	XS	S	M	L	XL

# RESORT 7 MM



man

CE

7 mm

## FEATURES:



Size shown on the outside for quick identification.



Shoulders and knees reinforced in scratch-resistant Powertex.



Ultrastretch chest and hood.

One-piece suit made of 7-mm double-lined neoprene with Ultrastretch inserts and integrated hood. Front YKK zip with closure at the face and inner Glideskin flap. Comfortable closure at the cuffs and ankles with YKK zip.

### RESORT 7 MM

CODE 7 MM	0010064 +	003040	003055	003080	003105	003125	003145	003160
SIZE		S	M	L	XL	XXL	XXXL	XXXXL



# RESORT 5,5 MM



man

CE

5.5 mm

## FEATURES:



Size shown on the outside for quick identification.



Knees reinforced in Powertex.



Fine Plush lining for quick drying.

One-piece suit made in 5-mm double-lined neoprene with integrated hood. Front YKK zip with closure at the face and inner Glideskin flap. Comfortable closure at the cuffs and ankles with YKK zip.

### RESORT 5,5 MM

CODE 5.5 MM	0010045 +	007040	007055	007080	007105	007125	007145
SIZE		S	M	L	XL	XXL	XXXL

# RIESE 8,5 MM

NEW

man

CE

8.5 mm



## FEATURES:

A

Jacket and Farmer John with 8.5-mm rubber.

B

Arm and calves with preformed cut.

C

Supratex knee pads.

8.5-mm two-piece suit consisting of a hooded jacket and Farmer John. Made in soft double-lined neoprene, this model features an anatomical, preformed cut on the arms and legs. Knee pads reinforced with latest-generation Supratex II.

### RIESE 8,5 MM

CODE 8.5 MM	0010175 +	215040	215055	215080	215105	215125	215145
SIZE		S	M	L	XL	XXL	XXXL

# PRIVILEGE XT

man & lady



CE

7 mm

5 mm

## FEATURES:



Nylon XT Extend coating.



Nylon Dry Fiber inside.



Comfort around the face thanks to the side zip.

7-mm and 5-mm two-piece suit consisting of a hooded jacket, YKK zip at the face, and Farmer John. Made in double-lined neoprene, this model features an anatomical, preformed cut on the arms and legs. Knee pads reinforced with Supratex.

### PRIVILEGE XT MAN

CODE 7 MM 0010065 +	003040	003055	003080	003105	003125	003145
CODE 5 MM 0010065 +	007040	007055	007080	007105	007125	007145
SIZE	S	M	L	XL	XXL	XXXL

### PRIVILEGE XT LADY

CODE 5 MM 0010065 +	027025	027040	027055	027080	027105
SIZE	XS	S	M	L	XL

# SENSE LONG

man & lady

3 mm



FEATURES:



Toroidal ring in Smooth Skin.



Powertex knee pads.



Mesh Skin chest.

One-piece suit in double-lined 3-mm neoprene with rear zip and stainless steel sliding tab. Superelastic inserts at the collar and arms. Aquastop on the wrists and ankles with Smooth Skin seal.

**SENSE LONG MAN**

CODE 3 MM 0010078 +	011040	011055	011080	011105	011125	011145	011160
SIZE	S	M	L	XL	XXL	XXXL	XXXXL

**SENSE LONG LADY**

CODE 3 MM 0010078 +	031025	031040	031055	031080	031105	031125
SIZE	XS	S	M	L	XL	XXL

# SENSE SHORT

man & lady

2.5 mm



FEATURES:



Mesh Skin chest.



Adjustable Velcro.



Handy rear zip with long strap.

One-piece shorty in double-lined 2.5-mm neoprene with rear zip and stainless steel sliding tab. Superelastic inserts at the collar and arms. Aquastop with Smooth Skin seal.

**SENSE SHORT MAN**

CODE 2.5 MM <b>0010079</b> +	012040	012055	012080	012105	012125	012145	012160
SIZE	S	M	L	XL	XXL	XXXL	XXXXL

**SENSE SHORT LADY**

CODE 2.5 MM <b>0010079</b> +	032025	032040	032055	032080	032105	032125
SIZE	XS	S	M	L	XL	XXL

# RELAX LONG

**NEW**

man & lady

CE

2.2 mm



FEATURES:

**A**

Polyurethane knee pads.

**B**

Handy rear zip with long strap.

One-piece suit with rear zip in 2.2-mm double-lined neoprene. Preformed and anatomical cut with flat-lock stitching. Knee pads with polyurethane protection. Ideal suit for water sports.

**RELAX LONG MAN**

CODE 2.2 MM <b>0010089</b> +	282040	282055	282080	282105	282125	282145	282160
SIZE	S	M	L	XL	XXL	XXXL	XXXXL

**RELAX LONG LADY**

CODE 2.2 MM <b>0010089</b> +	382025	382040	382055	382080	382105	382125
SIZE	XS	S	M	L	XL	XXL

# RELAX SHORT

**NEW**

man & lady

2.2 mm



FEATURES:



Handy rear zip with long strap.



Adjustable Velcro.

One-piece shorty with rear zip in 2.2-mm double-lined neoprene. Preformed cut for the perfect suit for water sports like surfing, snorkeling, swimming, and kayaking.

**RELAX SHORT MAN**

CODE 2.2 MM 0010088 +	282040	282055	282080	282105	282125	282145	282160
SIZE	S	M	L	XL	XXL	XXXL	XXXXL

**RELAX SHORT LADY**

CODE 2.2 MM 0010088 +	382025	382040	382055	382080	382105	382125
SIZE	XS	S	M	L	XL	XXL

# EMOTION

**NEW**

man

1.5 mm



## FEATURES:

**A**

Multisport suit: freediving, snorkeling, pool and ocean swimming, surfing, etc.

**B**

No stitching in the underarms.

**C**

Inserts in glide-skin and mesh-skin neoprene.

One-piece double-lined 1.5-mm neoprene suit with ample Glide Skin and Mesh Skin inserts. Flat-lock stitching The anatomical, preformed cut and the lack of stitching around the underarms make this suit ideal for freediving and swimming in open water or the pool. Aquastop on the wrists and ankles with Smooth Skin seal.

## EMOTION

CODE <b>0010087</b> +	014040	014055	014080	014105	014125
SIZE	S	M	L	XL	XXL



# CIAO

man & lady

2.5 mm



FEATURES:



Convenient front zip.



Flap inside the zip to prevent seepage.



Scratch-resistant Lycra finish on the collar.

Shorty for water sports. Front zip makes it easy to put on. Double-lined 2.5-mm neoprene model with flat-lock stitching.

**CIAO MAN**

CODE 2.5 MM 0010067 +	012040	012055	012080	012105	012125	012145	012160
SIZE	S	M	L	XL	XXL	XXXL	XXXXL

**CIAO LADY**

CODE 2.5 MM 0010067 +	032025	032040	032055	032080	032105	032125
SIZE	XS	S	M	L	XL	XXL

# CIAO KID



kid

2.5 mm

Double-lined neoprene shorty for kids with front zip.

## CIAO KID

CODE 2.5 MM	0010067 +	051205	051210	051215	051220	051225
SIZE		5	7	9	11	13

# HIPPO



boy & girl

1.5 mm

Kid's shorty with front zip and standard nylon lining. In Lycra, with UV Protection on the arms and legs.

## HIPPO

CODE BOY	0010061 +	121202	121205	121210	121215	121220	121225
CODE GIRL	0010061 +	136202	136205	136210	136215	136220	136225
AGE		3	5	7	9	11	13

**BODY**



3 mm

3-mm double-lined undersuit with shorts.

**BODY • 0110004**

CODE MAN	011040	011055	011080	011105	011125	011145
CODE LADY	031025	031040	031055	031080	031105	-
SIZE	XS	S	M	L	XL	XXL

**SHORT VEST**



2.5 mm

2.5-mm undersuit vest.

**SHORT VEST • 0110005**

CODE MAN	012040	012055	012080	012105	012125	012145
CODE LADY	032025	032040	032055	032080	032105	-
SIZE	XS	S	M	L	XL	XXL

**TEKNO**



5 mm

Ultraflex/Thermal Fiber. Smooth open-cell on the collar to ensure better adherence to the suit.

**TEKNO • 0260002**

CODE	064030	064055	064080	064105	064130
SIZE	XS/S	M	L	XL	XXL/XXXL

**STANDARD**



3 mm

5 mm

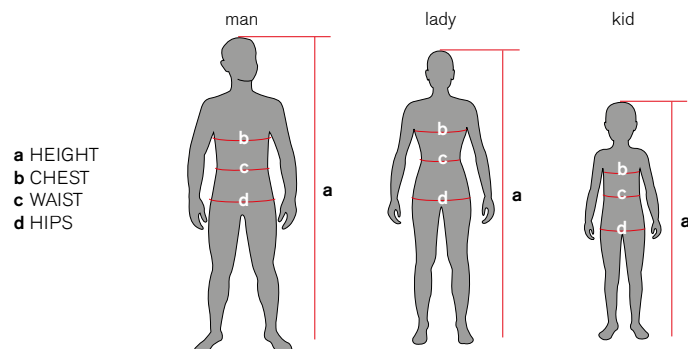
Double-lined neoprene available in 3 mm or 5 mm with air venting holes.

**STANDARD • 0260001**

CODE 5 MM	064030	064055	064080	064105	064125
CODE 3 MM	068030	068055	068080	068105	068125
SIZE	XS/S	M	L	XL	XXL

# WETSUIT SIZE TABLE

	SIZE/AGE	HEIGHT a		WEIGHT		CHEST b		WAIST c		HIPS d	
		cm	inch	kg	lb	cm	inch	cm	inch	cm	inch
MAN	<b>S</b>	167-172	65.7-67.7	60-69	132-152	94-98	25.1-38.5	76-80	29.9-31.4	88-92	34.6-36.2
	<b>M</b>	172-176	67.7-69.2	68-77	149-169	98-102	38.5-40.1	80-84	31.4-33.0	92-96	36.2-37.7
	<b>L</b>	176-180	69.2-70.8	76-85	167-187	102-106	40.1-41.7	84-88	33.0-34.6	96-100	37.7-39.3
	LT	180-184	70.8-72.4	76-85	167-187	102-106	40.1-41.7	84-88	33.0-34.6	96-100	37.7-39.3
	LP	176-180	69.2-70.8	84-94	185-207	106-110	41.7-43.3	88-92	34.6-36.2	100-104	39.3-40.9
	<b>XL</b>	180-184	70.8-72.4	84-94	185-207	106-110	41.7-43.3	88-92	34.6-36.2	100-104	39.3-40.9
	XLT	184-188	72.4-74.0	84-94	185-207	106-110	41.7-43.3	88-92	34.6-36.2	100-104	39.3-40.9
	XLP	180-184	70.8-72.4	93-103	205-227	112-118	44.0-46.4	94-100	37.0-39.3	106-112	41.7-44.0
	<b>XXL</b>	184-188	72.4-74.0	93-103	205-227	112-118	44.0-46.4	94-100	37.0-39.3	106-112	41.7-44.0
	XXLT	184-188	74.0-75.5	93-103	205-227	112-118	44.0-46.4	94-100	37.0-39.3	106-112	41.7-44.0
	XXLP	184-188	72.4-74.0	102-114	224-251	118-124	45.6-48.8	100-106	39.3-41.7	112-118	44.0-46.4
	<b>XXXL</b>	188-192	74.0-75.5	102-114	224-251	118-124	45.6-48.8	100-106	39.3-41.7	112-118	44.0-46.4
	XXXLT	192-196	75.5-77.1	102-114	224-251	118-124	45.6-48.8	100-106	39.3-41.7	112-118	44.0-46.4
	XXXLP	188-192	74.0-75.5	110-125	242-275	122-126	48.0-49.6	104-108	40.9-42.5	116-120	45.6-47.2
<b>XXXXL</b>	192-196	75.5-77.1	110-125	242-275	122-126	48.0-49.6	104-108	40.9-42.5	116-120	45.6-47.2	
LADY	<b>XS</b>	156-160	61.4-62.9	40-49	88-108	84-88	33.0-34.6	68-72	26.7-28.3	84-88	33.0-34.6
	<b>S</b>	160-164	62.9-64.5	47-56	103-123	88-92	34.6-36.2	72-76	28.3-29.9	88-92	34.6-36.2
	<b>M</b>	164-168	64.5-66.1	54-63	119-138	92-96	36.2-37.7	76-80	29.9-31.4	92-96	36.2-37.7
	MP	164-168	64.5-66.1	61-70	134-154	96-100	37.7-39.3	80-84	31.4-33.0	96-100	37.7-39.3
	<b>L</b>	168-172	66.1-67.7	61-70	134-154	96-100	37.7-39.3	80-84	31.4-33.0	96-100	37.7-39.3
	LP	168-172	66.1-67.7	68-77	149-169	100-104	39.3-40.9	84-88	33.0-34.6	100-104	39.3-40.9
	<b>XL</b>	172-178	67.7-70.0	68-77	149-169	100-104	39.3-40.9	84-88	33.0-34.6	100-104	39.3-40.9
	XLP	172-178	67.7-70.0	77-89	169-196	104-108	40.9-42.5	88-92	34.6-36.2	104-108	40.9-42.5
	<b>XXL</b>	176-180	69.2-70.8	77-89	169-196	104-108	40.9-42.5	88-92	34.6-36.2	108 - 116	40.9-42.5
KID	XS/ 5	115-125	45.2-49.2	-	-	67-71	26.3-27.9	53-57	20.8-22.4	64-68	25.1-26.7
	S/7	125-135	49.2-53.1	-	-	72-76	28.3-29.9	57-61	22.4-24.0	69-73	27.1-28.7
	M/9	135-145	53.1-57.0	-	-	77-81	30.3-31.8	61-65	24.0-25.5	74-78	29.1-30.7
	L/11	145-155	57.0-61.0	-	-	82-86	32.2-33.8	65-69	25.5-27.1	79-83	31.1-32.6
	XL/13	155-165	61.0-64.9	-	-	87-91	34.2-35.8	69-74	27.1-29.1	84-88	33.0-34.6




# TECHNICAL CHARACTERISTICS

	MASTERDRY		KOMODA 7 MM		KOMODA 5 MM		FREEDOM 7 MM	
								
	MAN	LADY	MAN	LADY	MAN	LADY	MAN	LADY
CODE	0010048		0010083		0010083		0010200	
CODE EXTENSION	003	023	007	027	003	023	230	330
MILLIMETRES	7	7	7	7	5	5	7	7
SIZE	from S to XXXXL	from XS to XXL	from S to XXXXL	from XS to XXL	from S to XXXXL	from XS to XXL	from S to XXXXL	from XS to XXL
SUPERSTRETCH	✓	✓	✓	✓	✓	✓	✓	✓
YAMAMOTO NEOPRENE			✓	✓	✓	✓	✓	✓
PREFORMED ANATOMICAL CUT	✓	✓	✓	✓	✓	✓	✓	✓
DOUBLE CUFF SYSTEM	✓	✓	✓	✓	✓	✓		
KNEE PADS	✓	✓	✓	✓	✓	✓	✓	✓
SHOULDER PADS	✓	✓	✓	✓	✓	✓		
THERMAL FIBER PLUSH	✓	✓	✓	✓	✓	✓		
AQUASTOP	✓	✓	✓	✓	✓	✓	✓	✓

	FREEDOM 5 MM		FREEDOM 3,5 MM		ALIEN 5 MM		RESORT 7 MM	RESORT 5,5 MM
								
	MAN	LADY	MAN	LADY	MAN	LADY	MAN	MAN
CODE	0010200		0010200		0010037		0010064	0010045
CODE EXTENSION	250	350	265	365	007	027	003	007
MILLIMETRES	5	5	3.5	3.5	5	5	7	5.5
SIZE	from S to XXXXL	from XS to XXL	from S to XXXXL	from XS to XXL	from S to XXXL	from XS to XL	from S to XXXXL	from S to XXXL
SUPERSTRETCH	✓	✓	✓	✓			✓	
YAMAMOTO NEOPRENE	✓	✓	✓	✓				
PREFORMED ANATOMICAL CUT	✓	✓	✓	✓	✓	✓	✓	✓
DOUBLE CUFF SYSTEM								
KNEE PADS	✓	✓	✓	✓	✓	✓	✓	✓
SHOULDER PADS							✓	✓
THERMAL FIBER PLUSH								
AQUASTOP	✓	✓	✓	✓	✓	✓		

# TECHNICAL CHARACTERISTICS

	RIESE 8,5		PRIVILEGE XT			SENSE LONG		SENSE SHORT	
									
	MAN	MAN	LADY	MAN	LADY	MAN	LADY		
CODE	0010175	5010065			0010078		0010079		
CODE EXTENSION	215	003	007	027	011	031	012	032	
MILLIMETRES	8.5	7	5	5	3	3	2.5	2.5	
SIZES	from S to XXXL	from S to XXXL	from S to XXXL	from XS to XL	from S to XXXXL	from XS to XXL	from S to XXXXL	from XS to XXL	
SUPERSTRETCH		✓			✓	✓	✓	✓	
PREFORMED ANATOMICAL CUT	✓	✓	✓	✓	✓	✓	✓	✓	
DOUBLE CUFF SYSTEM									
KNEE PADS	✓	✓	✓	✓	✓	✓			
THERMAL FIBER PLUSH		✓	✓	✓					
AQUASTOP		✓	✓	✓	✓	✓	✓	✓	

	RELAX LONG		RELAX SHORT		EMOTION		CIAO		HIPPO	
										
	MAN	LADY	MAN	LADY	MAN	MAN	LADY	JUNIOR	BOY	GIRL
CODE	0010089		0010088		0010087		0010067		0010061	
CODE EXTENSION	282	382	282	382	014	120	032	051	121	136
MILLIMETRES	2.2	2.2	2.2	2.2	1.5	2.5	2.5	2.5	1.5	1.5
SIZE	from S to XXXXL	from XS to XXL	from S to XXXXL	from XS to XXL	from S to XXL	from S to XXXXL	from XS to XXL	ages 5 to 13	ages 3 to 13	ages 3 to 13
SUPERSTRETCH										
PREFORMED ANATOMICAL CUT	✓	✓	✓	✓	✓	✓	✓	✓	✓	✓
KNEE PADS	✓	✓	✓	✓	✓					
THERMAL FIBER PLUSH										
AQUASTOP					✓					

# DRY SEAL 300/500



3.5/5-mm glove in Superstretch neoprene to ensure maximum comfort. 100% waterproof thanks to the Liquid Seal on the stitching and the innovative internal Glide Skin ring with the Aquastop Ring Seal system. Maximum heat retention is further enhanced by our choice of Therma Fiber plush for the lining. Palms reinforced with Rubber Coated cut-resistant material.

3.5 mm

5 mm

### DRY SEAL 300 • 0160022

CODE 3.5 MM	068040	068055	068080	068105	068125
SIZE	S	M	L	XL	XXL

### DRY SEAL 500 • 0160023

CODE 5 MM	064040	064055	064080	064105	064125
SIZE	S	M	L	XL	XXL

# SNUG DRY



Anatomical glove made in super elastic nylon, with an scratch-resistant next-generation supratex II palm. Waterproof stitching in latex polyurethane, and special preformed cut in glideskin neoprene at the wrists to ensure a perfectly waterproof seal. Available in two thicknesses: 3.0 mm and 5.0 mm.

3 mm

5 mm

### SNUG DRY 3 MM • 0160050

CODE 3 MM	068040	068055	068080	068105	068125
SIZE	S	M	L	XL	XXL

### SNUG DRY 5 MM • 0160054

CODE 5 MM	064040	064055	064080	064105	064125
SIZE	S	M	L	XL	XXL

## AMARA HD



1.5 mm

1.5-mm glove in standard nylon, amara on the palm, and Velcro closure with elastic.

### AMARA HD • 0160001

CODE 1.5	071025	071040	071055	071080	071105
SIZE	XS	S	M	L	XL

## TROPIC HD



1.5 mm

1.5-mm multipurpose snorkeling and scuba glove with Tatex palm and Velcro closure.

### TROPIC HD • 0160008

CODE 1.5	071025	071040	071055	071080	071105
SIZE	XS	S	M	L	XL

## ULTRAFLEX



2 mm  
3.5 mm

Ultraflex neoprene glove with Rubber Coated palm.



### ULTRAFLEX 2 MM • 0160003

CODE 2 MM	070030	070070	070110
SIZE	XS/S	M/L	XL/XXL

### ULTRAFLEX 3,5 MM • 0160046

CODE 3.5 MM	067030	067070	067110
SIZE	XS/S	M/L	XL/XXL

## ANATOMIC HD



2.5 mm  
3.5 mm

2.5- and 3.5-mm standard nylon glove, palm in non-slip PU.

### ANATOMIC HD 2,5 • 0160009

CODE	069015	069025	069040	069055	069080	069105	069125
SIZE	XXS	XS	S	M	L	XL	XXL

### ANATOMIC HD 3,5 • 0160009

CODE	067015	067025	067040	067055	067080	067105	067125
SIZE	XXS	XS	S	M	L	XL	XXL



## ROCK BOOT HD

3 mm

Boot with rigid sole designed for use with dry suits and soft-bootie dry suits.



### ROCK BOOT HD • 0210009

CODE 3 MM	068040	068055	068080	068105	068125	068145
SIZE	S	M	L	XL	XXL	XXXL

## PRO HD

6 mm

6-mm shoe with high grip sole and zip making it easier to put on.



### PRO HD • 0210007

CODE 6 MM	062015	062025	062040	062055	062080	062105	062125
SIZE	XXS	XS	S	M	L	XL	XXL

## BASIC HD

5 mm

5-mm boot with semi-rigid sole, PU protection on the instep, fin strap notch on the heel, and lining in standard nylon.



### BASIC HD • 0210006

CODE 5 MM	064015	064025	064040	064055	064080	064105	064125
SIZE	XXS	XS	S	M	L	XL	XXL

## REGULAR

5 mm

5-mm boot with semi-rigid sole and PU protection on the instep



### REGULAR • 0210050

CODE 5 MM	064015	064025	064040	064055	064080	064105	064125
SIZE	XXS	XS	S	M	L	XL	XXL

## STANDARD HD



2.5 mm

Anatomical 2.5-mm boot in standard nylon.

### STANDARD HD • 0210017

CODE 2.5 MM	069025	069040	069055	069080	069105	069125
SIZE	XS	S	M	L	XL	XXL

## ANATOMIC



7 mm  
5 mm  
3.5 mm

Anatomical 3.5/5/7-mm boot with top in "Smooth Skin" and Supratex sole.

### ANATOMIC • 0210018

CODE 7 MM	060040	060055	060080	060105	060125
CODE 5 MM	064040	064055	064080	064105	064125
CODE 3.5 MM	067040	067055	067080	067105	067125
SIZE	S	M	L	XL	XXL

## MASTIC



Liquid neoprene adhesive for small repairs, 30 g.

### Package of 30.

CODE	1110069000000
------	---------------

## HANGER



Universal hanger with special spaces for each component of your scuba equipment.

CODE	1110055000000
------	---------------

# WARM GUARD LONG

man & lady

Long-sleeve suit in 0.5-mm compressed neoprene.



## WARM GUARD LONG • 1550005

MAN	001025	001040	001055	001080	001105	001125
LADY	002025	002040	002055	002080	002105	-
SIZE	XS	S	M	L	XL	XXL

# WARM GUARD SHORT

man & lady

Short-sleeve suit in 0.5-mm compressed neoprene.



## WARM GUARD SHORT • 1550006

MAN	001025	001040	001055	001080	001105	001125
LADY	002025	002040	002055	002080	002105	-
SIZE	XS	S	M	L	XL	XXL

# RAA LONG EVO

**NEW**

man & lady



**SLIM FIT.**  
85% Polyester  
15% Spandex  
UV 97.5 UPF40+

## RAA LONG EVO • 1550002

MAN	000025	000040	000055	000080	000105	000125	000145	000160
LADY	002025	002040	002055	002080	002105	-	-	-
SIZE	XS	S	M	L	XL	XXL	XXXL	XXXXL

# RAA SHORT EVO

**NEW**

man & lady



**SLIM FIT.**  
85% Polyester  
15% Spandex  
UV 97.5 UPF40+

## RAA SHORT EVO • 1550003

MAN	000025	000040	000055	000080	000105	000125	000145	000160
LADY	002025	002040	002055	002080	002105	-	-	-
SIZE	XS	S	M	L	XL	XXL	XXXL	XXXXL

# RAA KID EVO

NEW

kid



**SLIM FIT.**  
85% Polyester  
15% Spandex  
UV 97,5 UPF40+

**RAA LONG KID EVO • 1550002**

CODE	003208	003213	003218	003223
AGE	6	8	10	12

**RAA SHORT KID EVO • 1550003**

CODE	003208	003213	003218	003223
AGE	6	8	10	12

# RAA PANT EVO

NEW

man & lady & kid



**RAA PANT EVO MAN • 1550004**

CODE	000025	000040	000055	000080	000105	000125	000145	000160
SIZE	XS	S	M	L	XL	XXL	XXXL	XXXXL

**RAA PANT EVO LADY • 1550004**

CODE	002025	002040	002055	002080	002105
SIZE	XS	S	M	L	XL

**RAA SHORT EVO KID • 1550004**

CODE	003208	003213	003218	003223
AGE	6	8	10	12

# T-SUN LONG

**NEW**

man & lady



Available in black/green and white/green for men, and black/pink and white/pink for women.



85% Polyester  
15% Spandex  
UV 97.5 UPF40+

## T-SUN LONG • 1550015

BLACK/GREEN MAN	007025	007040	007055	007080	007105	007125	007145	
WHITE/GREEN MAN	011025	011040	011055	011080	011105	011125	011145	
BLACK/PINK LADY	008025	008040	008055	008080	008105	-	-	
WHITE/PINK LADY	012025	012040	012055	012080	012105	-	-	
SIZE		XS	S	M	L	XL	XXL	XXXL

# T-SUN SHORT

**NEW**

man & lady



Available in black/green and white/green for men, and black/pink and white/pink for women.



85% Polyester  
15% Spandex  
UV 97.5 UPF40+

## T-SUN SHORT • 1550016

BLACK/GREEN MAN	007025	007040	007055	007080	007105	007125	007145	
WHITE/GREEN MAN	011025	011040	011055	011080	011105	011125	011145	
BLACK/PINK LADY	008025	008040	008055	008080	008105	-	-	
WHITE/PINK LADY	012025	012040	012055	012080	012105	-	-	
SIZE		XS	S	M	L	XL	XXL	XXXL

# T-SUN LONG KID

NEW

boy & girl



Available in blue and pink.



85% Polyester  
15% Spandex  
UV 97.5 UPF40+

## T-SUN LONG KID • 1550015

C. BLUE	009202	009205	009210	009215	009220
PINK	010202	010205	010210	010215	010220
AGE	3	5	7	9	11

# T-SUN SHORT KID

NEW

boy & girl



Available in blue and pink.



85% Polyester  
15% Spandex  
UV 97.5 UPF40+

## T-SUN SHORT KID • 1550016

C. BLUE	009202	009205	009210	009215	009220
PINK	010202	010205	010210	010215	010220
AGE	3	5	7	9	11

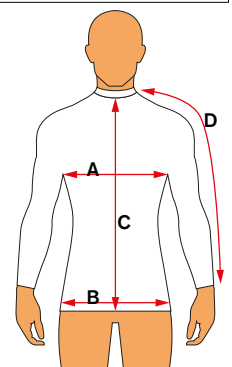
# SIZE TABLE

## RASH GUARD SIZE TABLE

	SIZE/AGE	1/2 CHEST A cm	1/2 HIPS B cm	TORSO LENGTH C cm	SLEEVE LENGTH D cm
MAN SHORT SLEEVE	XS	40	41	64.5	33
	S	42	43	66	34.5
	M	44	45	67.5	36
	L	46	47	69	37.5
	XL	48	49	70.5	39
	XXL	50	51	72	40.5
	XXXL	52	53	73.5	42
XXXXL	54	55	75	43.5	
MAN LONG SLEEVE	XS	40	41	64.5	68
	S	42	43	66	70
	M	44	45	67.5	72
	L	46	47	69	74
	XL	48	49	70.5	76
	XXL	50	51	72	78
	XXXL	52	53	73.5	80
XXXXL	54	55	75	82	
LADY SHORT SLEEVE	XS	38	39	62.5	32.5
	S	40	41	64	34
	M	42	43	65.5	35.5
	L	44	45	67	37
	XL	46	47	68.5	38.5
LADY LONG SLEEVE	XS	38	39	62.5	65
	S	40	41	64	67
	M	42	43	65.5	69
	L	44	45	67	71
	XL	46	47	68.5	73
KID SHORT SLEEVE	3 (4)	29	30	43	20
	5 (6)	31	32	47	22
	7 (8)	33	34	51	24
	9 (10)	35.5	37	57	26
	11 (12)	37	38	58	28
	13 (14)	39	40	61	30
KID LONG SLEEVE	3 (4)	29	30	43	45
	5 (6)	31	32	47	49
	7 (8)	33	34	51	53
	9 (10)	35.5	37	57	57
	11 (12)	37	38	58	61
	13 (14)	39	40	61	65

## BOOT SIZE TABLE

SIZE	XXS	XS	S	M	L	XL	XXL
EU-SIZE	36-37	37-38	38-39	40-41	42-43	43-44	45-46
CM	23	24	25	26	27	28	29







## **Mask and snorkel technology**

Our products and their design feature exclusive technological innovation and consistent reliability: these are the founding principles that drive the work of our mask and mouthpiece designers every day at Seac. This enables us to offer a wide range of masks and mouthpieces structured to meet any diving need, ranging from a good fit against your face to your comfort and safety.

# ITALIA

PURE SILICONE

S/KL



FEATURES:



Wide field of vision.



Differentiated thickness on the Comfort Silicone skirt.







Made in Italy.

**Model:** dual-lens with wide field of vision • **Frame:** polycarbonate with chrome-plated metal screw seats and stainless steel screws • **Skirt:** soft silicone in differentiated thicknesses, with broad textured surfaces. Areas in contact with the face created to achieve a perfect fit • **Strap:** liquid silicone • **Lenses:** Ultra Clear tempered optical glass, 3-mm thick • **Optical lenses:** options include negative -1.0 to -6.0 and positive +1.0 to +3.0 • **Package:** rigid transparent box.

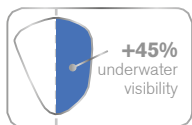
Package of 6 per code.

**ITALIA • 0750037**

 METALLIC BLUE	001180
 METALLIC YELLOW	001367
 METALLIC BLACK	001521
 METALLIC RED	001740
 LIMITED EDITION	999000
MODEL	S/KL

# ITALIA

PURE SILICONE



S/BL



S/BL - LS



S/BL - LS



FEATURES:



Wide field of vision.



Differentiated thickness on the Comfort Silicone skirt.



LS Version with special mirrored lens treatment.

**Model:** dual-lens with wide field of vision • **Frame:** polycarbonate with chrome-plated metal screw seats and stainless steel screws • **Skirt:** soft silicone in differentiated thicknesses, with broad textured surfaces. Areas in contact with the face created to achieve a perfect fit • **Strap:** Liquid silicone • **Lenses:** Ultra Clear tempered optical glass, 3-mm thick • **LS Version:** with special mirrored lens treatment (increases contrast and visibility) and metal effect frame (special scratch-resistant paint) • **Optical lenses:** options include negative -1.0 to -6.0 and positive +1.0 to +3.0 • **Package:** rigid transparent box.

Package of 6 per code.

ITALIA • 0750037

● BLACK/METALLIC CLEAR BLUE	003165	-
● BLACK/METALLIC ORANGE	-	004041
● BLACK/METALLIC BLUE	003180	004180
● BLACK/METALLIC YELLOW	-	004367
● BLACK/METALLIC BLACK	003521	004521
● BLACK/METALLIC RED	003740	004740
MODEL	S/BL	S/BL - LS

# ITALIA ASIAN FIT

PURE SILICONE



S/KL



S/WH



## FEATURES:



Asian faces



The 3D Pivoting Buckle system lets the buckle find the right position.



Made in Italy.

**Model:** dual-lens with wide field of vision • **Frame:** polycarbonate with chrome-plated metal screw seats and stainless steel screws • **Skirt:** soft silicone in differentiated thicknesses, with broad textured surfaces. Areas in contact with the face created to achieve a perfect fit. Asian Fit version specially designed for more slender faces • **Strap:** liquid silicone • **Lenses:** Ultra Clear tempered optical glass, 3-mm thick • **Optical lenses:** options include negative -1.0 to -6.0 and positive +1.0 to +3.0 • **Package:** rigid transparent box.

Package of 6 per code.

### ITALIA ASIAN FIT • 0750040

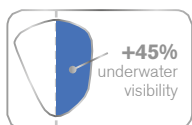
METALLIC CLEAR BLUE	001165
METALLIC YELLOW	001367
LIMITED EDITION	999000
MODEL	S/KL

### ITALIA ASIAN FIT • 0750040

WHITE/AQUAMARINE	010018
WHITE/PINK	010680
MODEL	S/WH

# ITALIA ASIAN FIT

PURE SILICONE



S/BL - LS



S/BL - LS



FEATURES:



Asian faces



The 3D Pivoting Buckle system lets the buckle find the right position.



LS Version with special mirrored lens treatment.

**Model:** dual-lens with wide field of vision • **Frame:** polycarbonate with chrome-plated metal screw seats and stainless steel screws • **Skirt:** soft silicone in differentiated thicknesses, with broad textured surfaces. Areas in contact with the face created to achieve a perfect fit. Asian Fit version specially designed for more slender faces • **Strap:** Liquid silicone • **LS Version:** tempered glass lenses with special mirrored treatment (increases contrast and visibility) and metal effect frame (special scratch-resistant paint) • **Optical lenses:** options include negative -1.0 to -6.0 and positive +1.0 to +3.0 • **Package:** rigid transparent box.

Package of 6 per code.

## ITALIA ASIAN FIT • 0750040

	BLACK/METALLIC ORANGE	004041
	BLACK/METALLIC WHITE	004130
	BLACK/METALLIC CLEAR BLUE	004165
	BLACK/METALLIC BLUE	004180
	BLACK/METALLIC YELLOW	004360
	BLACK/METALLIC BLACK	004521
	BLACK/METALLIC PINK	004681
	BLACK/METALLIC RED	004740
	MODEL	S/BL - LS

# ITALICA

NEW & PURE SILICONE



S/KL



FEATURES:



Skirt in clear Comfort Silicone.



Self-positioning buckle with 3D pivoting system.







Made in Italy.

**Model:** single-lens with wide field of vision • **Frame:** polycarbonate with chrome-plated metal screw seats and stainless steel screws • **Skirt:** soft silicone in differentiated thicknesses, with broad textured surfaces. Areas in contact with the face created to achieve a perfect fit • **Strap:** liquid silicone • **Lens:** Ultra Clear tempered optical glass, 3-mm thick • **Package:** rigid transparent box.

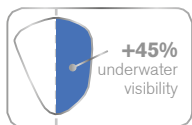
Package of 6 per code.

**ITALICA • 0750053**

 METALLIC BLUE	001180
 METALLIC YELLOW	001367
 METALLIC BLACK	001521
 METALLIC RED	001740
 LIMITED EDITION	999000
MODEL	S/KL

# ITALICA

NEW & PURE SILICONE



S/BL



S/BL - LS



S/BL - LS



FEATURES:



Skirt in clear Comfort Silicone.



Ultra Clear or LS version lens with special mirrored treatment.



Made in Italy.

**Model:** single-lens with wide field of vision • **Frame:** polycarbonate with chrome-plated metal screw seats and stainless steel screws • **Skirt:** soft silicone in differentiated thicknesses, with broad textured surfaces. Areas in contact with the face created to achieve a perfect fit • **Strap:** liquid silicone • **Lens:** Ultra Clear tempered optical glass, 3-mm thick • **Version LS:** with special mirrored lens treatment (increases contrast and visibility) and metal effect frame (special scratch-resistant paint) • **Package:** rigid transparent box.

Package of 6 per code.

ITALICA • 0750053

● BLACK/METALLIC CLEAR BLUE	003165	-
● BLACK/METALLIC BLUE	003180	004180
● BLACK/METALLIC BLACK	003521	004521
● BLACK/METALLIC RED	003740	004740
● BLACK/METALLIC ORANGE	-	004041
● BLACK/METALLIC YELLOW	-	004367
MODEL	S/BL	S/BL - LS

# ITALICA ASIAN FIT

NEW & PURE SILICONE



S/KL



S/WH



## FEATURES:



Comfort Silicone skirt with Asian fit for more slender faces.



Ultra Clear single lens.






Made in Italy.



**Model:** single-lens with wide field of vision • **Frame:** polycarbonate with chrome-plated metal screw seats and stainless steel screws • **Skirt:** soft silicone in differentiated thicknesses, with broad textured surfaces. Areas in contact with the face created to achieve a perfect fit. Asian Fit version specially designed for more slender faces • **Strap:** liquid silicone • **Lens:** Ultra Clear tempered optical glass, 3-mm thick • **Package:** rigid transparent box.

Package of 6 per code.

### ITALICA ASIAN FIT • 0750054

 METALLIC CLEAR BLUE	001165
 METALLIC YELLOW	001367
 LIMITED EDITION	999000
MODEL	S/KL

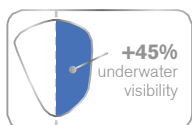
### ITALICA ASIAN FIT • 0750054

 WHITE/AQUAMARINE	010018
 WHITE/PINK	010680
MODEL	S/WH



# ITALICA ASIAN FIT

NEW & PURE SILICONE



S/BL - LS



S/BL - LS



## FEATURES:



Black Comfort Silicone skirt with Asian fit for narrower faces.



Lens with special mirrored treatment.



Made in Italy.

**Model:** single-lens with wide field of vision • **Frame:** polycarbonate with chrome-plated metal screw seats and stainless steel screws • **Skirt:** soft silicone in differentiated thicknesses, with broad textured surfaces. Areas in contact with the face created to achieve a perfect fit. Asian Fit version specially designed for more slender faces • **Strap:** Liquid silicone • **LS Version:** tempered glass lens with special mirrored treatment (increases contrast and visibility) and metal effect frame (special scratch-resistant paint) • **Package:** rigid transparent box.

Package of 6 per code.

### ITALICA ASIAN FIT • 0750054

	BLACK/METALLIC ORANGE	004041
	BLACK/METALLIC WHITE	004130
	BLACK/METALLIC CLEAR BLUE	004165
	BLACK/METALLIC BLUE	004180
	BLACK/METALLIC YELLOW	004367
	BLACK/METALLIC BLACK	004521
	BLACK/METALLIC PINK	004681
	BLACK/METALLIC RED	004740
	MODEL	S/BL - LS

# TOUCH

NEW & PURE SILICONE



COLOR



COLOR



FEATURES:



Opaque colored Comfort Silicone skirt.



Frameless technology with reduced internal volume.



Strap customized with Seac logo.

**Structure:** silicone mounted with “frameless” technology • **Skirt:** liquid silicone with differentiated thicknesses, comfortable, compact, and smaller in volume • **Lens:** single lens in tempered glass • **Buckles:** dual button • **Design:** designed and manufactured in Italy • **Packaging:** transparent rigid box included.

Package of 6 per code.

**TOUCH · 0750055**

● PURPLE	090903
● BLACK	003520
● CLEAR BLUE	009080
● BLUE	015160
● YELLOW	020360
● PINK	050680
● GREEN	070880
● RED	080720
MODEL	S/COL

# SET TOUCH

**NEW & PURE SILICONE**



S/COL



S/BL



Set including Touch mask, with "frameless" structure system and Fast Dry snorkel with purge valve, dry top, and corrugated silicone hose. Available in black and blue colored silicone.

Package of 6 per code.

**SET TOUCH • 089005**

● CLEAR BLUE	7080000	-
● BLACK	-	6520000
MODEL	COL	S/BL

# MANTRA



**Structure:** silicone • **Skirt:** liquid silicone  
**Strap:** silicone • **Lens:** single lens in tempered glass • **Packaging:** transparent rigid box included.

Package of 6 per code.

**MANTRA · 0750035**

● CLEAR BLUE	009080
● PINK	050680
● YELLOW	020360
MODEL	S/COL

COLOR



# MANTRA MD



**Structure:** silicone • **Skirt:** liquid silicone in MD version for more slender faces  
**Strap:** silicone • **Lens:** single lens in tempered glass • **Packaging:** transparent rigid box included.

Package of 6 per code.

**MANTRA MD · 0750036**

● CLEAR BLUE	009080
● PINK	050680
● YELLOW	020360
MODEL	S/COL

COLOR



# FOX



S/KL



S/BL



S/WH



Universal box for storing masks.



FEATURES:



Differentiated thickness on the Comfort Silicone skirt.



Buckle folds to occupy less space.



Smooth Edges to maximize comfort against your face.

**Frame:** polycarbonate • **Skirt:** Hypoallergenic Comfort Silicone with differentiated thickness • **Strap:** silicone • **Lenses:** symmetrical in tempered glass • **Optical lenses:** options from -1.0 to -6.0 • **Packaging:** transparent rigid box included.

Package of 6 per code.

**FOX · 0750031**

● AQUAMARINE	001018	-	-
● METALLIC BLUE	001180	-	-
● BLACK	001520	-	-
● BLACK/BLACK	-	003520	-
● BLACK/METALLIC BLUE	-	003528	-
● BLACK/METALLIC RED	-	003539	-
● WHITE/AQUAMARINE	-	-	010018
● WHITE/PINK	-	-	010680
MODEL	S/KL	S/BL	S/WH

**MASK BOX**

CODE 111009500000

# E-FOX



S/KL



S/WH



S/BL



## FEATURES:



Differentiated thickness on the Comfort Silicone skirt.



Buckle folds to occupy less space.



Asia Fit with special focus on the nose.

**Frame:** polycarbonate • **Skirt:** Hypoallergenic Comfort Silicone with differentiated thickness in a version for more slender faces • **Strap:** silicone • **Lenses:** symmetrical in tempered glass • **Optical lenses:** options from -1.0 to -6.0 • **Packaging:** transparent rigid box included.

Package of 6 per code.

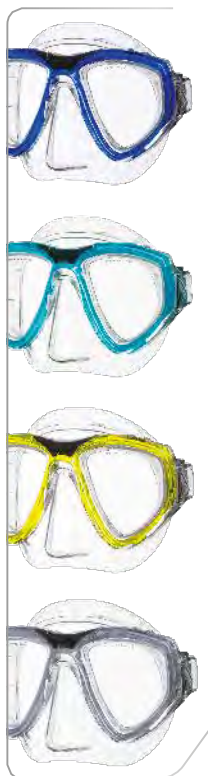
### E-FOX • 0750032

 AQUAMARINE	001018	-	-
 BLACK/METALLIC BLUE	-	003528	-
 WHITE/AQUAMARINE	-	-	010018
 WHITE/PINK	-	-	010680
MODEL	S/KL	S/BL	S/WH

# ONE



S/KL



S/BL



## FEATURES:



Anatomical skirt in high-quality liquid silicone.



Buckle on the frame with Easy Touch system.



Option to mount optical lenses.

**Frame:** polycarbonate • **Skirt:** hypoallergenic liquid silicone • **Strap:** silicone • **Lenses:** in tempered glass • **Optical lenses:** options from -1.0 to -6.0 • **Packaging:** transparent rigid box included.

Package of 6 per code.

### ONE • 0750017

● BLUE	001160	-
● CLEAR BLUE	001164	-
● YELLOW	001360	-
● BLACK	001520	-
● BLACK/BLACK	-	003520
MODEL	S/KL	S/BL

# EXTREME



FEATURES:



Buckle on the skirt featuring the Tubing Connected System that ensures a secure seal and minimizes the pressure of the mask against your face.



New anatomical skirt in high-quality liquid silicone.



Option to mount optical lenses.

S/KL



S/BL



**Frame:** polycarbonate • **Skirt:** hypoallergenic liquid silicone • **Strap:** silicone • **Lenses:** in tempered glass • **Optical lenses:** options from -1.0 to -6.0.

Package of 6 per code.

**EXTREME • 0750033**

● CLEAR BLUE	001164	-
● YELLOW	001360	-
● BLACK/BLACK	-	003520
MODEL	S/KL	S/BL



# TECHNICAL CHARACTERISTICS

	ITALIA			ITALIA ASIAN FIT			ITALICA			ITALICA ASIAN FIT			TOUCH
CODE	0750037			0750040			0750053			0750054			0750055
CODE EXTENSION	001	003	004	001	004	010	001	003	004	001	004	010	
SILICONE COLOR	S/KL	S/BL	S/BL LS	S/KL	S/BL LS	S/WH	S/KL	S/BL	S/BL LS	S/KL	S/BL LS	S/WH	S/COL
COLOR													
COMFORT SILICONE		✓			✓			✓			✓		✓
FRAMELESS													✓
REDUCED INTERNAL VOLUME													✓
BUCKLE ON THE FRAME		✓			✓			✓			✓		
AMPLE FIELD OF VISION		✓			✓			✓			✓		✓
ULTRA CLEAR LENSES		✓			✓			✓			✓		

	MANTRA	MANTRA MD	FOX			E-FOX			ONE		EXTREME	
CODE	0750035	0750036	0750031			0750032			0750017		0750033	
CODE EXTENSION			001	003	010	001	004	010	001	003	001	003
SILICONE COLOR	S/COL	S/COL	S/KL	S/BL	S/WL	S/KL	S/BL LS	S/WH	S/KL	S/BL	S/KL	S/BL LS
COLOR												
COMFORT SILICONE				✓			✓					
FRAMELESS	✓	✓										
REDUCED INTERNAL VOLUME									✓		✓	✓
BUCKLE ON THE FRAME				✓			✓		✓		✓	✓
AMPLE FIELD OF VISION	✓	✓										
ULTRA CLEAR LENSES												

# VORTEX DRY



S/KL



## FEATURES:



Clear liquid silicone corrugated hose.



Purge valve.










Dry top.

**Model:** clear silicone snorkel with dry top system and purge valve • **Mouthpiece:** body in two-tone polycarbonate material, mouthpiece in liquid silicone • **Tube:** plastic material with liquid silicone corrugated hose.

Package of 12 per code.

### VORTEX DRY • 0840022

 AQUAMARINE	001018
 WHITE	001120
 WHITE/AQUAMARINE	001121
 WHITE/PINK	001132
 BLUE	001160
 YELLOW	001360
 PINK	001680
MODEL	S/KL

# VORTEX DRY



S/BL



## FEATURES:



Black liquid silicone corrugated hose.



Purge valve.



Dry top.

**Model:** black silicone snorkel with dry top system and purge valve • **Mouthpiece:** body in two-tone polycarbonate material, mouthpiece in liquid silicone • **Tube:** plastic material with liquid silicone corrugated hose.

Package of 12 per code.

### VORTEX DRY • 0840022

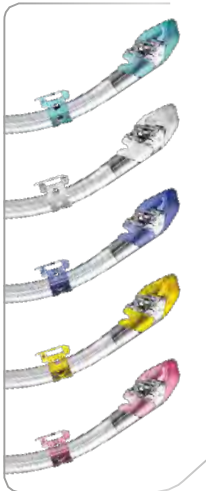
● BLACK/ORANGE	003041
● BLACK/WHITE	003120
● BLACK/CLEAR BLUE	003164
● BLACK/METALLIC BLUE	003180
● BLACK/YELLOW	003360
● BLACK/BLACK	003520
● BLACK/PINK	003680
● BLACK/METALLIC RED	003740
MODEL	S/BL

# FAST DRY

NEW



S/KL








FEATURES:

- A**  
Clear liquid silicone corrugated hose.
- B**  
Purge valve.
- C**  
Dry top.

**Model:** clear silicone snorkel with dry top system and purge valve • **Mouthpiece:** liquid silicone • **Tube:** plastic material with liquid silicone corrugated hose.

Package of 12 per code.

**FAST DRY • 0840032**

	AQUAMARINE	001018
	WHITE	001120
	BLUE	001160
	YELLOW	001360
	PINK	001680
	MODEL	S/KL

# FAST DRY

NEW



FEATURES:

A

Black liquid silicone corrugated hose.

B

Purge valve.

C

Dry top.

S/BL



**Model:** black silicone snorkel with dry top system and purge valve • **Mouthpiece:** liquid silicone • **Tube:** plastic material with liquid silicone corrugated hose.

Package of 12 per code.

**FAST DRY • 0840032**

● BLACK	003520
● BLACK/WHITE	003524
MODEL	S/BL

# FAST TECH



S/KL



**Model:** Snorkel with anti-splash top and purge valve  
**• Mouthpiece:** silicone • **Tube:** ABS body with liquid silicone corrugated hose.

Package of 12 per code.

**FAST TECH • 0840011**

● BLUE	001160
● YELLOW	001360
● BLACK	001520
● RED	001720
MODEL	S/KL

**SNORKEL RETAINER FAST TECH**

CODE	0870004000000
------	---------------

# VORTEX



COLOR



**Model:** Snorkel with anti-splash top and purge valve  
**• Mouthpiece:** liquid silicone • **Tube:** polycarbonate body with liquid silicone corrugated hose.

FEATURES:



Liquid silicone corrugated hose.



Purge valve.



Anti-splash top.

**VORTEX • 0840016**

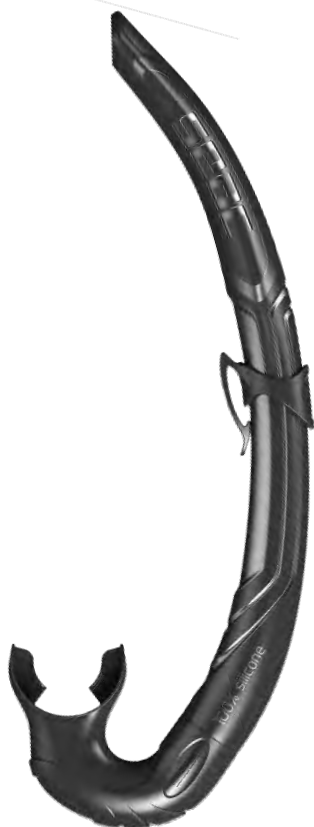
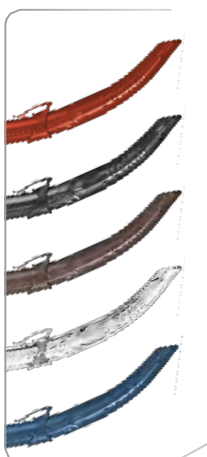
○ WHITE	001120	-
● BLUE	001160	-
● CLEAR BLUE	001164	-
● BLACK/RED	-	003538
MODEL	S/KL	S/BL

# LIQUID

NEW



COLOR



FEATURES:

A

Ultra-flexible tube with advanced shape memory.

B

Differentiated snorkel cross section.

C

Ergonomic mouthpiece in hypoallergenic silicone.

**Model:** 100% High Quality Liquid Silicone snorkel • **Tube:** differentiated cross section designed to ensure excellent breathing and allow the diver to expel water quickly and efficiently. We chose 100% silicone for two main reasons: it's the only material that doesn't change its characteristics or its behavior based on the temperature, and it has sufficient memory to recover its original shape even after being deformed for long periods.

Package of 12 per code.

**LIQUID • 0840023**

● RED	080720	-	-
● BLACK	-	003520	-
● BROWN	040440	-	-
● TRANSPARENT	-	-	001800
● BLUE	015160	-	-
MODEL	COL	S/BL	S/KL

# TURTLE

NEW



**Model:** snorkel entirely in silicone • **Tube:** in folding silicone with elastic memory that always returns to its original shape, even after being deformed for long periods. Model with snorkel carrying shell included.

Package of 12 per code.

**TURTLE • 0840031**

● BLACK	003520
MODEL	S/BL

# JET



COLOR



**Mouthpiece:** silicone • **Tube:** polycarbonate.

Package of 12 per code.

**JET • 0840014**

● BLUE	001160	-
● BLACK	001520	-
○ TRANSPARENT	001800	-
● BLACK/BLACK	-	003520
MODEL	S/KL	S/BL

## MASK STRAP



Liquid silicone strap.  
16 mm.

**STRAP**

S/KL CODE 0780012000000  
S/BL CODE 0780013000000

**STRAP WITH LOGO**

S/BL CODE 0780017000000

## QUICK SNORKEL RETAINER



CODE 0870009000000

## UNIVERSAL SNORKEL RETAINER



Universal snorkel retainer  
loop.

CODE 1120074000000

## SNORKEL RETAINER RING



Universal Ø 26 ring loop.

CODE 0870001000000



# MASK LENSES

## EXTREME • 0800001

CODE	002000	003000	004000	005000	006000	007000	008000	009000	010000	011000	012000
MODEL	- 1	- 1.5	- 2	- 2.5	- 3	- 3.5	- 4	- 4.5	- 5	- 5.5	- 6

## ONE DX • 0800008

CODE	002000	003000	004000	005000	006000	007000	008000	009000	010000	011000	012000
MODEL	- 1	- 1.5	- 2	- 2.5	- 3	- 3.5	- 4	- 4.5	- 5	- 5.5	- 6

## ONE SX • 0800009

CODE	002000	003000	004000	005000	006000	007000	008000	009000	010000	011000	012000
MODEL	- 1	- 1.5	- 2	- 2.5	- 3	- 3.5	- 4	- 4.5	- 5	- 5.5	- 6

## FOX/E-FOX • 0800014

CODE	002000	003000	004000	005000	006000	007000	008000	009000	010000	011000	012000
MODEL	- 1	- 1.5	- 2	- 2.5	- 3	- 3.5	- 4	- 4.5	- 5	- 5.5	- 6

## ITALIA DX • 0800015

CODE	002000	003000	004000	005000	006000	007000	008000	009000	010000	011000	012000
MODEL	- 1	- 1.5	- 2	- 2.5	- 3	- 3.5	- 4	- 4.5	- 5	- 5.5	- 6

## ITALIA DX • 0800015

CODE	022000	023000	024000	025000	026000
MODEL	+ 1	+ 1.5	+ 2	+ 2.5	+ 3

## ITALIA SX • 0800016

CODE	002000	003000	004000	005000	006000	007000	008000	009000	010000	011000	012000
MODEL	- 1	- 1.5	- 2	- 2.5	- 3	- 3.5	- 4	- 4.5	- 5	- 5.5	- 6

## ITALIA SX • 0800016

CODE	022000	023000	024000	025000	026000
MODEL	+ 1	+ 1.5	+ 2	+ 2.5	+ 3

## LENS REPLACEMENT TOOL



CODE 078001800000

## ANTIFOG BIO GEL

**NEW**



CODE 15 ML 1110099000000

CODE 30 ML 1110099000000

# TECHNICAL CHARACTERISTICS

	VORTEX DRY		FAST DRY		FAST TECH
CODE	0840022		0840032		0840011
CODE EXTENSION	001	003	001	004	001
SILICONE COLOR	S/KL	S/BL	S/KL	S/BL	S/KL
COLOR					
ANATOMICAL MOUTHPIECE	✓		✓		✓
CORRUGATED HOSE	✓		✓		✓
ANTI-SPLASH TOP					✓
PURGE VALVE	✓		✓		✓
DRY TOP	✓		✓		

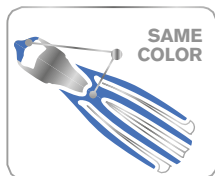
	VORTEX		LIQUID			TURTLE	JET	
CODE	0840016		0840023			0840031	0840014	
CODE EXTENSION	001	003	001	003	040	003	001	003
SILICONE COLOR	S/KL	S/BL	S/KL	S/BL	COL	S/BL	S/KL	S/BL
COLOR								
ANATOMICAL MOUTHPIECE	✓		✓			✓	✓	
CORRUGATED HOSE	✓							
ANTI-SPLASH TOP	✓							
PURGE VALVE	✓							
DRY TOP								



## Fin technology

Seac fins are the result of meticulous design work by our in-house designers both on short- and long-blade fins, with products dedicated to swimming, snorkeling, freediving, and especially scuba. Either open- or closed-foot, they are designed for consistent comfort and flexibility, and to deliver the very best thrust optimization in every kick.

# F1 S



COLOR



FEATURES:



Sling Strap System.



Protections on the ribbing to guarantee long-lasting durability.



Non-slip sole on the foot pocket.

**Blade material:** high-performance compound of Ultralight Flex technopolymers with excellent impact resistance, even at low temperatures  
**• Foot pocket material:** combinations of technopolymer and thermoplastic elastomer • **Strap:** with Sling Strap System, color coordinated with the blade • **Weight (single fin):** 730 g.

Package of 4 per code.

**F1 S • 0710036**

○ WHITE/PINK	132050	132070	132095
○ WHITE/AQUAMARINE	123050	123070	123095
● BLACK/BLACK	520050	520070	520095
● BLACK/BLUE	160050	160070	160095
● BLACK/YELLOW	360050	360070	360095
● BLACK/RED	720050	720070	720095
SIZE	S/M	M/L	L/XL

# F1



## COLOR



## FEATURES:



Thick strap.



Stabilizing ridges.



Rigid frame integrated to stabilize the kick.

**Blade material:** high-performance compound of Ultralight Flex technopolymers with excellent impact resistance, even at low temperatures  
**• Foot pocket material:** combinations of technopolymer and thermoplastic elastomer • **Weight (single fin):** 730 g.

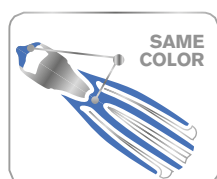
Package of 4 per code.

### F1 • 0710037

● BLACK/BLACK	520050	520070	520095
● BLACK/BLUE	160050	160070	160095
● BLACK/RED	720050	720070	720095
SIZE	S/M	M/L	L/XL

# PROPULSION S

NEW COLOR



COLOR



FEATURES:



Sling Strap System.



Ribbing in dual material.



Water channels.

**Blade material:** polyolefin thermoplastic with special formula • **Foot pocket material:** thermoplastic elastomer • **Strap:** with Sling Strap System, color coordinated with the blade • **Weight (single fin):** 980 g.

Package of 4 per code.

## PROPULSION S • 0710043

○ WHITE	120050	120070	120095
● BLUE	160050	160070	160095
● YELLOW	360050	360070	360095
● BLACK	520050	520070	520095
SIZE	S/M	M/L	L/XL

# PROPULSION



## COLOR



## FEATURES:



Water channels.



Ribbing in dual material.



Foot pocket with ample entry and thick strap.

**Blade material:** polyolefin thermoplastic with special formula • **Foot pocket material:** thermoplastic elastomer • **Weight (single fin):** 980 g.

Package of 4 per code.

### PROPULSION • 0710012

● BLUE	160050	160070	160095
● YELLOW	360050	360070	360095
● BLACK	520050	520070	520095
● PINK	680050	680070	-
SIZE	S/M	M/L	L/XL

# GP 100 S



FEATURES:



Made in Italy.



Non-slip covering on foot pocket sole.



Elastomer coating on the blade to prevent wear and abrasions.

**Blade material:** high-performance technopolymer • **Foot pocket material:** thermoplastic elastomer • **Strap:** with Sling Strap System • **Weight (single fin):** 1,250 g.

Package of 4 per code.

**GP 100 S • 0710038**

○ WHITE	120030	120050	120070	120095	120110
● BLUE	160030	160050	160070	160095	160110
● YELLOW	360030	360050	360070	360095	360110
● BLACK	520030	520050	520070	520095	520110
● RED	720030	720050	720070	720095	720110
SIZE	XS/S	S/M	M/L	L/XL	XL/XXL



# F 100 PRO

NEW COLOR



COLOR



FEATURES:

**A**  
Rubber inserts on the blade to prevent wear and abrasions.

**B**  
New ergonomically shaped foot pocket.

**C**  
Inserts in a third material on the blade to optimize snap.

**Blade material:** technopolymer with high modulus of elasticity • **Foot pocket material:** thermoplastic rubber • **Weight (single fin):** 748 g.

Package of 4 per code.

**F 100 PRO • 0710001**

○ WHITE	120451	120461	120471	120481	120491	120501
● BLUE	160451	160461	160471	160481	160491	160501
● YELLOW	360451	360461	360471	360481	360491	360501
● BLACK	520451	520461	520471	520481	520491	520501
● PINK	680451	680461	680471	-	-	-
● RED	720451	720461	720471	720481	720491	720501
SIZE	36/37	38/39	40/41	42/43	44/45	46/47

# FUGA

NEW COLOR



COLOR



FEATURES:



Water channeling and ridges.



External ribbing.



High performance technopolymer blade.

**Blade material:** technopolymer with high modulus of elasticity • **Foot pocket material:** thermoplastic rubber • **Weight (single fin):** 558 g.

Package of 6 per code.

**FUGA • 0710004**

● BLUE	160451	160461	160471	160481	160491	160501
● YELLOW	360451	360461	360471	360481	360491	360501
● BLACK	520451	520461	520471	520481	520491	520501
○ WHITE	120451	120461	120471	120481	120491	120501
● RED	720451	720461	720471	720481	-	-
SIZE	36/37	38/39	40/41	42/43	44/45	46/47

## SLING STRAP

Sling Strap System.



### SLING STRAP • 073002

○ WHITE	3120000	4120000
● BLACK	3520000	4520000
● BLUE	3525040	4525000
● YELLOW	3529040	4529000
● RED	3538040	4538000
SIZE	SMALL XS-M	REGULAR M-XXL

## UNIVERSAL STRAP

Universal fin strap.



CODICE 0730003000000

## QRB BUCKLE

Complete fin buckle.



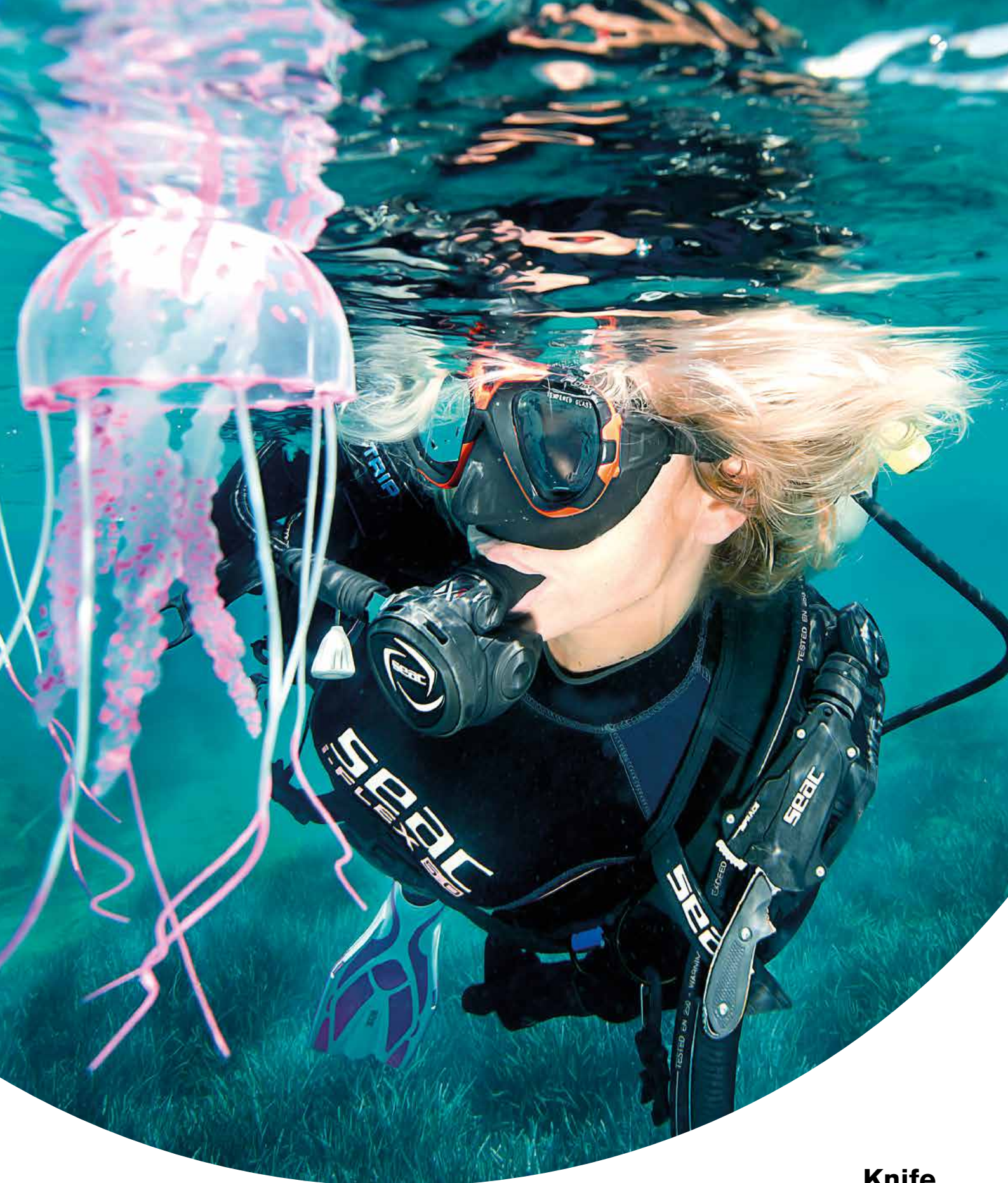
CODICE 0730002000000



# TECHNICAL CHARACTERISTICS

	F1 S			F1			PROPULSION S			PROPULSION		
CODE	0710036			0710037			0710043			0710012		
SIZE	S/M	M/L	L/XL	S/M	M/L	L/XL	S/M	M/L	L/XL	S/M	M/L	L/XL
EU SIZE	37/39	40/42	43/45	37/39	40/42	43/45	37/39	40/42	43/45	37/39	40/42	43/45
LENGTH X WIDTH (MM)	600 x 205	635 x 220	680 x 230	600 x 205	635 x 220	680 x 230	620 x 220	680 x 230	690 x 235	620 x 220	680 x 230	690 x 235
COLOR												
ADJUSTABLE OPEN FOOT POCKET	✓			✓			✓			✓		
FULL FOOT POCKET												
WATER CHANNELS							✓			✓		
NON-SLIP	✓			✓			✓			✓		
STABILIZERS	✓			✓			✓			✓		
THICK STRAP				✓						✓		
SLING STRAP SYSTEM	✓						✓					
HIGH PERFORMANCE TECHNOPOLYMER BLADE	✓			✓			✓			✓		
RIBBING	✓			✓			✓			✓		

	GP 100 S					F 100 PRO						FUGA							
CODE	0710038					0710001						0710004							
SIZE	XS/S	S/M	M/L	L/XL	XL/XXL														
EU SIZE	34/36	37/39	40/42	43/45	46/48	36/37	38/39	40/41	42/43	44/45	46/47	36/37	38/39	40/41	42/43	44/45	46/47		
LENGTH X WIDTH (MM)	630 x 210	640 x 210	670 x 220	710 x 240	715 x 240	570 x 185	585 x 190	625 x 200	650 x 205	680 x 220	690 x 220	555 x 180	570 x 185	590 x 190	625 x 200	650 x 210	665 x 215		
COLOR																			
ADJUSTABLE OPEN FOOT POCKET	✓																		
FULL FOOT POCKET						✓						✓							
WATER CHANNELS	✓					✓						✓							
NON-SLIP	✓					✓						✓							
STABILIZERS	✓					✓													
THICK STRAP																			
SLING STRAP SYSTEM	✓																		
HIGH PERFORMANCE TECHNOPOLYMER BLADE	✓					✓						✓							
RIBBING	✓					✓						✓							



## Knife technology

Seac offers a wide range of dive knives made with tempered stainless steel blades to ensure the most reliable possible knife for both quality and performance.

# KATAN



COLOR



AISI 420 stainless steel blade fitted with built-in line cutter. Dual-material ergonomic handle. Shockproof plastic sheath with asymmetric Easy Lock button closure system.

**KATAN • 0550014**

- GREEN 880000
- WHITE 120000

# KATAN DAGA



COLOR



AISI 420 tempered stainless steel blade. Typical stiletto shape. Dual-material ergonomic handle. Sheath with Easy Lock system. Options to fasten weights on the belt, calf, or forearm.

**KATAN DAGA • 0550015**

- GREEN 880000
- RED 720000

# HAMMER

NEW



Dive knife with AISI 420 tempered stainless steel blade and a stainless steel end-cap hammer at the end of the grip. Blade 120-mm long, with straight edge on one side and serrated edge + line cutter on the other. Grip over-molded with soft thermoplastic rubber providing a non-slip surface for a safe grip. A hole for fastening the line is provided at the end of the grip. Rigid sheath with large knife release button in the center.

## HAMMER

● BLACK 0550017520000

# BAT

NEW



Dive knife with AISI 420 tempered stainless steel blade. Blade 120-mm long, with straight edge on one side and serrated edge + line cutter on the other. Hand grip covered in thermoplastic rubber for a safe grip. Stainless steel hilt. Release button on grip. Rigid scabbard.

## BAT

● GREEN 0550018880000

# DEVIL HD

NEW



Knife with special tempered stainless steel blade, with stiletto shape designed specifically for underwater spearfishing. Excellent penetration and cutting ability on both edges, straight and serrated. Click sheath with Push & Pull Out system that can be operated one-handed, even when wearing gloves.

## DEVIL HD

CODE 0550020520000

# SAMURAI



Tempered and polished stainless steel blade for maximum resistance to corrosion.

## SAMURAI • 0550016

○ WHITE	120000
● BLACK	520000
● RED	720000
● GREEN	880000



# K-JACK

**NEW**



Stainless steel blade fitted with built-in line cutter. Dual-material ergonomic handle. Shockproof plastic sheath with asymmetrical Easy Lock button closure system.

## K-JACK

CODE 0550019000000

## KNIFE STRAPS

Pair of knife straps with stainless steel buckle.



Package of 12 per code.

CODE 0580001000000

## KNIFE STRAP

Universal knife strap ring.



Package of 12 per code.

CODE SMALL 0580003000000

CODE BIG 0580002000000

# TECHNICAL CHARACTERISTICS

	KATAN	KATAN DAGA	HAMMER	BAT	DEVIL HD	SAMURAI	K-JACK
CODE	0550014	0550015	0550017	0550018	0550020	0550016	0550019
KNIFE LENGTH (MM)	235	235	250	235	180	150	145
BLADE LENGTH (MM)	115	115	120	120	90	70	60
TEMPERED STAINLESS STEEL BLADE	✓	✓	✓	✓	✓	✓	✓
SERRATED BLADE	✓	✓	✓	✓	✓	✓	✓
STRAIGHT BLADE	✓	✓	✓	✓	✓	✓	✓
LINE CUTTER	✓		✓	✓			✓
BACK FASTENING KIT							✓
END-CAP HAMMER			✓				
SAFETY CLOSURE	✓	✓	✓	✓	✓	✓	✓





## Bag technology

Every diver knows there is a big difference between a bag marketed as good for diving and a bag conceived and designed for the needs of an actual diver. Roominess and weight capacity, the sturdiness of the materials and details, breathable and waterproof fabrics, logically-designed and compact shapes, convenient transport with easy access to the compartments, and a full range of accessories and functions are only some of the most important characteristics. At Seac we pay as much attention to our unique and exclusive trolley system. It's convenient and functional, compact, and incredibly sturdy.

# MATE FLIGHT HD



FEATURES:



Telescoping pull-out handle.

**Material:** 600D Polyester with PVC covering • **Dimensions:** 77 x 47 x 35 cm • **Volume:** 126 Lt • **Empty weight:** 3 Kg.

MATE FLIGHT HD • 0920001

CODE 002000

## MATE 2.5 HD



**Material:** 600D Polyester with PVC covering • **Dimensions:** 85 x 45 x 33 cm  
 • **Volume:** 126 Lt • **Empty weight:** 2.5 kg  
 • Telescoping pull-out handle.

**MATE 2.5 HD • 0920002**

CODE 005000

## MATE 200 HD



**Material:** 600D Polyester with PVC covering • **Dimensions:** 80 x 35 x 40 cm  
 • **Volume:** 110 Lt • Fin pocket with closing buckle.

**MATE 200 HD • 0920002**

CODE 004000

## MATE NET



**Material:** 1680 denier Nylon coupled with PVC + Nylon draining mesh •  
**Dimensions:** 29 X 34 X 78 cm • **Volume:** 77 Lt • Compact System.

**MATE NET • 0920003**

CODE 008000

# SEAL



**Material:** waterproof heavy duty heat-sealed PVC backpack • **Dimensions:** 32x32x95 cm • **Volume:** 75 Lt.

**SEAL • 0920017**

CODE	000000
------	--------

# U-BOOT



**Material:** heat-sealed 500 Denari PVC with reinforcing patches on the handles • **Dimensions:** 94 X 31 X 36 • **Volume:** 105 Lt.

**U-BOOT • 0920005**

CODE	000000
------	--------

# DRY BAG

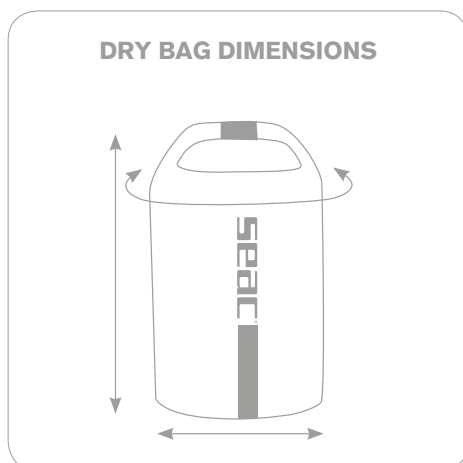
**NEW COLOR & SIZE**

Dry bag with varying capacities and removable shoulder strap (1.5-lt bag without shoulder strap).



## DRY BAG • 09200

● RED	18012000	18011000	18010000	18009000	18120000	18118000
● BLACK	04260520	04220520	04180520	04140520	04120520	04118520
SIZE	20 lt	15 lt	10 lt	5 lt	2.5 lt	1.5 lt



# DRY CONTAINER



Dry tube, closes with 12 X Ø 4.5 cm screws.

## DRY CONTAINER

CODE 111004600000

# TECHNICAL CHARACTERISTICS

	MATE FLIGHT HD	MATE 2.5 HD	MATE 200 HD	MATE NET	SEAL	U-BOOT	MATE OCTO HD
							
CODE	0920001	0920002	0920002	0920003	0920017	0920005	0920002
CODE EXTENSION	1002000	005000	004000	008000	000000	000000	006000
MATERIAL	nylon + 600D	nylon + 600D	nylon + 600D	nylon 1680D			nylon + 600D
SIZE (CM)	77 x 47 x 35	85 x 45 x 33	80 x 35 x 40	29 x 34 x 78			30 x 10 x 28
VOLUME (L)	116	126	110	77			8.4
TROLLEY	✓	✓					
SHOULDER STRAP PROVIDED		✓			✓		
PULL-OUT HANDLE	✓						
HIGH-PERFORMANCE MATERIAL	✓		✓		✓	✓	✓
OUTSIDE POCKETS	✓	✓	✓		✓		✓
SHOULDER STRAP			✓	✓			✓
RIGID BACKPACK	✓						





## Accessories

To meet a diver's every need, Seac offers the most complete collection of dive accessories on the market, from marker buoys and wrist slates to two-tone whistles.

## LARGE BUOY



**Height:** 66 cm •  
**Circumference:** 121 cm •  
**Line:** 25 m.

CODE 0950013007000

## SMALL BUOY



**Height:** 56 cm •  
**Circumference:** 102 cm •  
**Line:** 25 m.

CODE 0950013008000

## SILURO FLUORESCENT BUOY



**Height:** 23 cm •  
**Height + Flag:** 50 cm •  
**Circumference:** 170 cm •  
**Line:** 25 m.

CODE 0950011000000

## SPHERICAL FLUORESCENT BUOY



**Height:** 31 cm •  
**Height + Flag:** 57 cm •  
**Circumference:** 104 cm •  
**Line:** 25 m.

CODE 0950012000000

## EMERGENCY BUOY



Vertical inflatable buoy including line and carabiner. Great for signaling a diver underwater or for a safety stop.

CODE 0950008000000

## FLAG



Buoy flag with pole.

CODE 0950006000000

## LINE



Package of 25 m.

CODE 0950009000000

## SPOOL REEL



Dual stainless steel carabiner, with 30 meters of white Ø 2 mm line.

CODE 1110043000000

## BELT WITH POCKETS



Number of compartments varies by size: S-3, M-4, L-5, XL-5.

CODE	0990004000040	0990004000055	0990004000080	0990004000105
MODEL	S	M	L	XL

## STAINLESS STEEL/NYLON BELT BUCKLE



Length 140 cm.

● BLACK/BLUE	0990001001000	0990002001000
● BLACK/SILVER	0990001003000	0990002003000
MODEL	stainless steel	nylon

## NYLON/STAINLESS STEEL BUCKLE



Universal buckles in stainless steel or nylon.

CODE	1020001000000	1020002000000
MODEL	stainless steel	nylon

## WEIGHTS



Natural lead.

CODE	1040003024000	1040003030000
KG	1	2

## SOFT ECO-FRIENDLY WEIGHTS



Lead shot packaged in nylon/polyurethane sacks. Advanced resistance to saline corrosion.

CODE	1040002024000	1040002027000	1040002030000
KG	1	1.5	2

## BARBELL WEIGHT



300 g. barbell-shaped weight.

CODE	1040005015000
MODEL	

## WEIGHT FASTENER



Universal nylon weight fasteners for belts.

Package of 4 per code.

CODE	7110003000000
PIECES	4

## COMPACT SLATE

**NEW**



Slate and pencil for communicating underwater.

CODE 1110100000000

## FLASH LIGHT



Flashing dive light for use at night or when visibility is poor. Burn time: 700 hours. Turns on when it hits the water. Max depth: 100 mt.

CODE 1110045000000

## TWO-TONE WHISTLE



Two-tone whistle in CE type approved plastic.

CODE 1110056520000







Headquarter

**SEACSUB S.p.A.**

via D. Norero, 29  
San Colombano Certenoli  
GE 16040  
ITALY

t. +39 0185 356301  
f. +39 0185 356300  
seacsub@seacsub.com

U.S.A. Office

**SEAC USA Corp.**

7855 NW 12th Street, Suite 219  
Miami, FL 33126  
USA

Mob. +1 786 580 3695  
seac.usa@seacusa.com

Follow us on:



[www.seacsub.com](http://www.seacsub.com)

[www.seacusa.com](http://www.seacusa.com)



[seacsub.com](http://seacsub.com)